



MINUTES OF THE
INNER HARBOUR COMMUNITY LIAISON GROUP

Date: 17 November 2009
Location: Boardroom – Fremantle Ports Administration Building
Time: 5.30pm to 7.00pm
Chairperson: Dr Simon Avenell

Community Representatives:

Dr Simon Avenell , Chair	David Earl , South Fremantle Precinct
Susan Philpott , Fremantle Inner City Residents Association (FICRA)	Rev. Dennis Cloughton , Flying Angel Club for Seafarers
Gerry MacGill , North Fremantle Precinct	Vicki Stuckey , Gibson Park Precinct
Eric Wilson , Port Beach Users Group	Susanna Bessell-Browne , SBB Enterprises
Beth Bax , Fremantle Volunteer Heritage Guides	Guy Bailey , Rottneest Express
	David Hawks , Fremantle Society

Fremantle Ports' Representatives:

Chris Leatt-Hayter , Chief Executive Officer	Ainslie de Vos , Manager External Affairs
Gino Valenti , General Manager Strategy and Planning	Jeanette Murray , External Affairs Coordinator
Franco Andreone , Manager Fremantle Waterfront	Helen Elliott , Community Relations Coordinator

Apologies:

Peter Nolin , Fremantle Chamber of Commerce	Scott Bailey , Rottneest Express
Bob Johnson , Maritime Heritage Association	Lloyd Owens , O'Connor Precinct Town of Mosman Park
Jude van der Merwe , ArtSource	Lisa Williams , WA Maritime Museum
	Matthew Piggott , City of Fremantle

Minutes:

1. Welcome, apologies and invitation for agenda items

Simon Avenell welcomed those present and called for additional agenda items. In response:

- Vicki Stuckey: transport of rocks for the new seawall.
- Denis Cloughton: information from Flying Angel Club.
- Ainslie de Vos: providing information on transport.
- FICRA via Susan Philpot: noise of trains and train schedule.

Ainslie de Vos reported that Fremantle Ports had been in touch with the Public Transport Authority, 9326 2851. PTA has tried various methods to quieten trains with lubricants.

Information provided:

Train numbers: The number of freight train services is currently in the range of 10 to 12 per week (20 to 24 train movements weekly). In mid 2008, when rail volumes were at their peak, there were 22 to 23 trains per week (44 to 46 train movements).

Current schedule (guide only): Arrivals: 10.40 am; 11.20 am; 23.45 pm; Departures: 5.10 am; 14.15 pm and 18.20 p.m. (Train times and train numbers can move around quite a bit, depending on freight volumes and other factors).

The Public Transport Authority owns and manages the track infrastructure from South Beach to North Quay for freight traffic. (The contact is Rob Davies, A/Manager Track and Structures, 9326 2851). The trains are privately operated.

Susan Philpot asked Ainslie to ask the PTA for the name of the company that operates the trains.

Action: AdV to follow up re rail operator details.

2. Minutes and actions from previous meeting

Minutes accepted.

3. Magellan Metals update

Information provided by Kane Blackman, Magellan Metals:

Kane provided an update but was unable to show PowerPoint because of technical difficulties. Copy of PowerPoint is attached.

Susan Philpot, on behalf of FICRA, presented questions which Kane Blackman will respond to within a month.

There was a request for the monitoring to be explained in layman's terms. Kane Blackman said one-page explanations were on the Magellan website at

<http://www.magellanmetals.com.au/compliance/monitoring/baseline-sampling.aspx>

Vicki Stuckey asked how many additional trains were required for the lead shipments. Kane Blackman said there were no additional trains but there were up to 125 containers a week.

Actions:

- Kane Blackman to provide Susan Philpot (FICRA) with answers to questions submitted.
- Fremantle Ports to provide the FICRA questions and Magellan's answers to all IHCLG members.
-

4. Trade update

Update provided by Chris Leatt-Hayter:

Container trade at Fremantle Ports was down by about 12-15% below. October trade figures showed upswing with figures nearly back to October 2008. The motor vehicle trade picked up recently; manufacturers are expecting the trade to pick up. New WA projects such as Gorgon will result in more cargo passing through Fremantle for infrastructure.

5. Fremantle Ports Optimum Planning Group

Update provided by Chris Leatt-Hayter:

The Fremantle Ports Optimum Planning Group was established in March 2009 by Transport Minister Simon O'Brien to make recommendations on the way forward for port planning to meet future trade needs. This included looking at the development of additional port facilities at Kwinana. Vicki Stuckey asked Chris for a contact on that group.

Action: Chris Leatt-Hayter to provide Vicki Stuckey with Greg Martin's contact details.

6. Inner Harbour Deepening Project update

Update provided by Gino Valenti on construction of the seawall extension at Rous Head to contain the reclamation. Aerial photographs of the coast from Swanbourne to Fremantle and of the river are being taken regularly so that any plume from the seawall construction and the dredging can be monitored. Work is progressing at the Berth 10 reconstruction.

Gino provided an explanation of the national guidelines for sediments and plumes. The material to be dredged has been tested and is deemed suitable for disposal offshore.

Aerial photos are currently available on the Fremantle Ports website.

Questions were asked about the national guidelines and who had done testing of the material to be dredged (Answer: The national guidelines are based on international guidelines and independent consultants did the testing.)

7. Loss Management Report September 2009 – October 2009

Information provided by Gino Valenti:

Communication of significant incidents, complaints and improvements relating to Inner Harbour operations, and that may be of interest to Community Liaison Group members.

26/10/09: Intermodal Link Services (ILS) advised that a container containing bulka bags/IBCs of lead carbonate concentrate in the DG storage area of their premises had some minor damage; no spill of product identified. Damage to the container was caused by a reversing truck. The truck hit the container about 300mm above the top of the bulka bags and as a result there was no impact on the contents. Container was inspected, sealed and transported back to minesite for repacking.

26/10/09: Protestors in three boats blocked the entry of the livestock carrier *Al Kuwait*. Harbour Master and Water Police notified. Water Police and port craft were deployed to prevent protesters from being injured. Water Police subsequently removed protesters from the harbour entrance.

12/10/09: The DEC Swan Region received a complaint late from a member of the public who alleged that Fremantle Ports was illegally dumping material into the water near Port Beach. Sent DEC copy of Ministerial statement and DEC audit table. Extended invitation for DEC officers to visit the site.

1/10/09: Member of FICRA reported that several members of FICRA were disturbed by train at night. The complaint was followed up with the Public Transport Authority.

7/9/09: Resident rang to complain about the hammering noise from Berth 10. The noise was associated with the reconstruction of Berth 10 as part of the deepening project. Research had gone into noise minimisation before the project began; the piles were 40 metres long and were mostly being vibrated in but had to be hammered in for the last 5m or so through limestone rock

Chris Leatt-Hayter said a tug had overturned the day before the meeting and that incident would be reported on at the next meeting. He said Fremantle Ports' response had been successful — within 12 hours the tug had been turned and towed out of harbour with no impact on the environment.

8. Cruise Shipping, Community Contributions and Maritime Day

Information provided by Ainslie de Vos:

Cruise ship update:

- Fremantle scheduled to receive 38 calls – 2009/10. Seasonally based (total passenger turnaround) ships will include *Sun Princess*, *Athena* and *Pacific Sun*. In comparison, in 2008/09, Fremantle had a total of 28 cruise calls
- Over 38,000 passengers and 13,000 crew through the Fremantle Passenger Terminal last

year.

- *Queen Victoria* and *QM2* will visit in February and March respectively.

Susanna Bessell-Browne said she had received very good feedback on the Fremantle Passenger Terminal from passengers. Chris Leatt-Hayter said shipping lines said it was the best terminal in Australia. Chris provided a summary of works on the terminal.

Celebrate Maritime Day: An inaugural expo was held at the Fremantle Passenger Terminal on 12/9/09. About 5000 people attended and there were 39 exhibitors at the free family day, with an emphasis on education and career opportunities. Schools were involved and there was excellent feedback from visitors and stallholders.

Community contribution: Information was provided on Fremantle Ports' sponsorship for schools, including South Fremantle Senior High School and 8 academic scholarships recently presented for Year 7 students entering the school next year; North Fremantle Community Centre (sponsorship for a barbecue area and a contribution towards interior renovations), Clontarf Aboriginal College – North Fremantle Hostel – funding for gym equipment; Fremantle on the Edge art initiative, Curtin University; Fremantle Hospital – Gage Roads Discharge Lounge; Fremantle and East Fremantle Heritage Awards; City of Cockburn Community Development Strategy (support for key environmental projects including Harmony Primary School's 'Greening the school community'; South Coogee Primary School's 'Bringing the birds', Phoenix Pre Primary School's 'Conserving and learning' project and a project marking World Environment Day with a series of activities for schools which were held at the Cockburn Wetlands Education Centre).

9. Fremantle Waterfront update

Update provided by Franco Andreone:

B shed is being renovated. 1st stage works include replacing boards, refurbishment of the floor, upgrading basic services, power upgrade, upgrading fire exits, repair of barn doors, repainting of internal and external.

2nd phase: Concentrating on eastern end of shed: new works, internal works to provide facilities for ferry operators, new toilets, new café development which will be external and internal, timber deck, alfresco area, awnings, interpretation (related to ferries and Rottnest), seating.

3rd phase: Expression of interest will be invited for café operator and fit out; possibly further heritage interpretation.

4th phase: Plan for centre space (Note: Leeuwin Ocean Adventure offices will remain in western end of B Shed).

Heritage interpretation plan: Consultants Lovell Chen refining the draft report.

Commercial Precinct: Fremantle Ports is seeking sign-off with the Public Transport Authority. ING is continuing with detailed designs, then embarking on construction drawings. Fremantle Ports is to complete basic services.

Victoria Quay Planning Committee: The Committee has been working towards strategic policy relating to the *Waterfront Masterplan*.

Welcome Walls at Maritime Museum: Stage 3 with 5000 names will be built. Construction expected to take place in March 2010.

Victoria Quay Taskforce: Ainslie de Vos and Franco Andreone have met with representatives about opportunities for interpretation of immigration on Victoria Quay.

10. General Business

- Denis Cloughton reported that he had attended an international seafarers' convention in New York. He said the New York Seafarers Club was one of main places to provide aid when the two towers fell. During discussions it was apparent that, in consultation with Fremantle Ports,

the Flying Angel Club for Seafarers provides the best transport for seafarers in the world. Denis said he had been asked to forward the Flying Angel experiences to others.

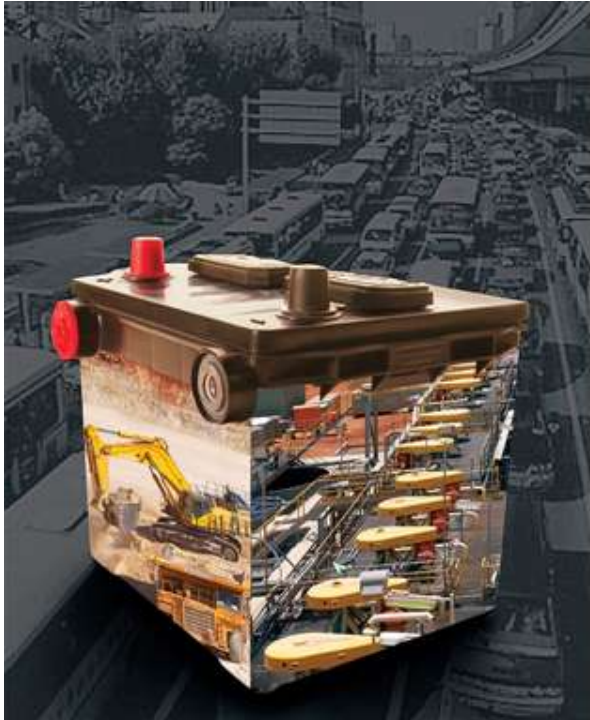
- Vicki Stuckey was concerned about the speed of some trucks carrying limestone to the seawall extension. Fremantle Ports will pass this information on to the trucking company.
- Susan Philpot thanked Fremantle Ports in advance for hosting FICRA's end of year meeting in the Fremantle Ports boardroom.
- Chris Leatt-Hayter thanked everyone for attending the meetings during the year and thanked the Chairman.

Conclusion:

Meeting concluded at 7.07pm.

Next meeting:

Tuesday 9 March 2010



Project Update

November 2009

Inner Harbour
Community Liaison Group

Ivernia
Magellan Metals Pty Ltd
www.ivernia.com

Introduction

- Ivernia is sole owner and operator of the Magellan lead mine:
 - Located in Western Australia.
 - Only significant pure lead mine in the world: ~2% of world mine supply.
 - One of the world's top 10 lead mines when at full production.
 - Significant by scale and purity.
- Open cut lead carbonate mine and processing (concentrate) facility.
- Located 30 km west of Wiluna in WA Goldfields mid-West region.



Ivernia

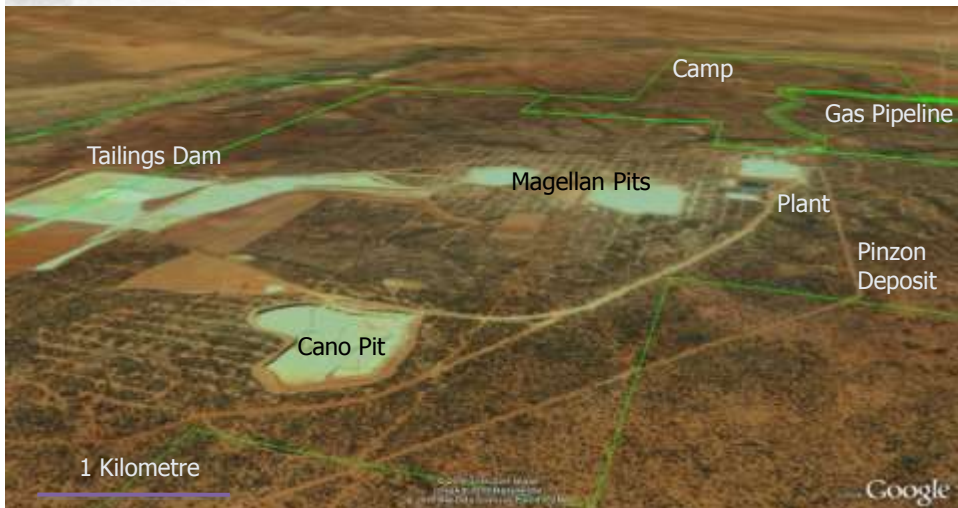
The Magellan Mine

- Exploration – feasibility - financing - construction – operation in 5 years: 2002 to 2006.
- Fly in - fly out: 170 person camp.
- Export to overseas customers.
- 50% off-take sales agreement with Yunnan Metallurgical Group.
- At full production ~85,000 tonnes of lead in concentrate per year.



Ivernia

Magellan Hill Looking East



Ivernia

Magellan Deposit



- Secondary horizontal layers
- Low cost mining (partly free dig)
- Strip ratio - 3:1 overall
- Large open pit floors
- Predominantly Cerrusite (PbCO_3)
- Minor Anglesite (PbSO_4)
- ROM pad full (1-2 months mill feed)
- Ore blocks marked up

Ivernia

Magellan Plant

- Plant produced at 1.5 million tonnes per annum equivalent, approval to increase to 1.9 million tonnes.
- Single stage primary crushing, secondary ball mill.
- Plant operated at 90% availability prior to shutdown.
- Sulphidize by froth flotation (NaHS).
- Typical sulphide concentrator.
- Concentrate pressure filter installed and to be commissioned.
- Gas pipeline to be commissioned at site and provide major power source.
- Lead recoveries of 75% to 80%.
- Lead carbonate concentrate 63% to 65% contained lead.



Ivernia

Project Status

- Approval in August 2009. Now shipping mine concentrate stockpiles through Fremantle.
- As of November 11, a total of 204 containers containing 4,400 DMT shipped.
- Regular shipments of remaining 16,600 DMT stockpile are planned to be completed by early 2010.
- Extensive mine restart planning process underway with the objective of restarting operations in early 2010.



Container Incident

- On 26th October 2009, a truck within the North Quay Rail Terminal reversed into a Magellan shipping container.
- A 40cm tear in the container wall occurred.
- No damage to bags and no product spill.
- Emergency Response Plan activated.
- Notifications.
- Attendance.

Monitoring

- Soil sampling (to be done Nov/Dec).
- Rainwater tank sampling (to be done Nov/Dec).
- Static dust sampling (transport route – to be done Nov/Dec).
- Sump sampling (to be done in Mar).
- Benthic sediment sampling (to be done in Mar).
- Container monitoring (Port)
 - Baseline being established.
- High-volume sampling (Port)
 - All results within background levels.
- Static Dust (Port).
 - All results within background levels.

Reports

- Independent Inspector compliance reports.
- Incident reporting.
- Annual Environmental Report.
- Project updates (Mining Proposal – Pinzon).



Questions?



www.magellanmetals.com.au

Ivernia
