

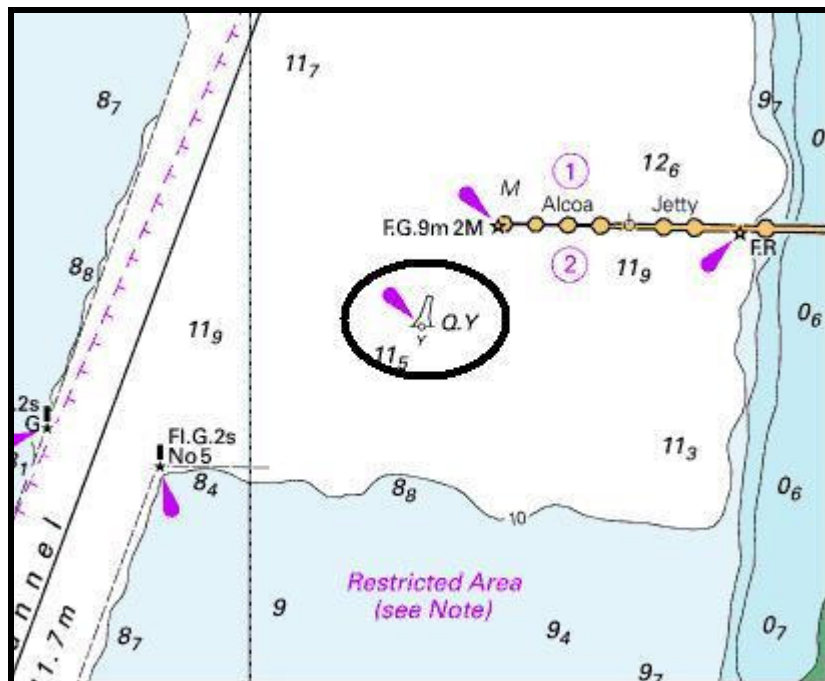


**THIS NOTICE IS FOR THE INFORMATION OF
SHIP'S MASTERS AND OTHERS CONCERNED.**

**FREMANTLE PORTS NOTICE TO MARINERS
16/2006**

**FREMANTLE PORT
OUTER HARBOUR – Special Buoy - Withdrawn**

The special buoy (as circled below) previously located in position (WGS84) 32-11.5S & 115-46.1E, being approximately 155 metres south-west of the end of the ALCOA jetty, has been permanently withdrawn and will not be replaced.



(Extract from Aus 114)

Mariners are advised to navigate with caution.

Charts Affected

RAN: Aus 114 - Aus 117

DPI: WA 001

Capt E J Atkinson
Harbour Master
Fremantle Ports
25 October, 2006