



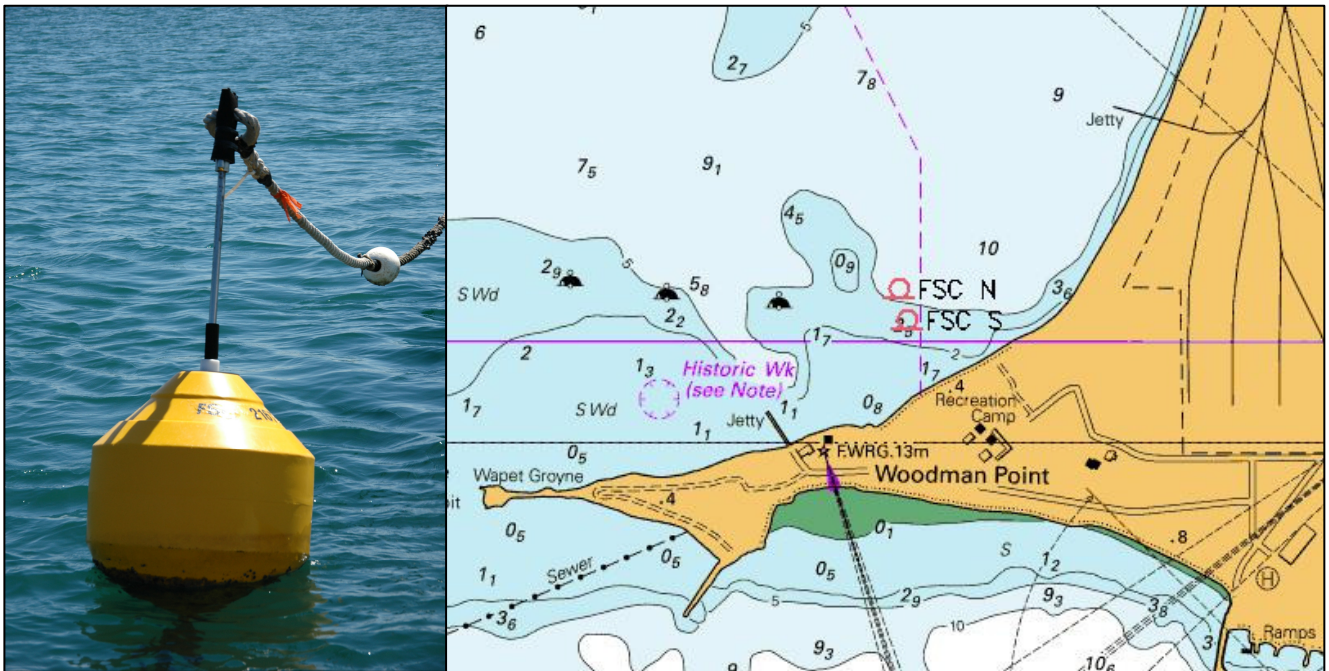
**THIS NOTICE IS FOR THE INFORMATION OF
SHIP'S MASTERS AND OTHERS CONCERNED**

**FREMANTLE PORTS NOTICE TO MARINERS
4/2009**

**FREMANTLE PORT
COCKBURN SOUND / WOODMAN POINT
Mooring Buoys**

Mariners are advised that two (2) new unlit yacht mooring buoys exist to the north of Woodman Point.

<i>Position (WGS84)</i>	<i>Marker Buoy & Light Characteristics</i>
32-07.8110 S 115-45.0620 E	Nil
32-07.7580 S 115-45.0470 E	Nil



New mooring

Extract from Aus 117 (marked FSC N and FSC S)

Mariners are advised to navigate with caution in this area.

Charts Temporarily Affected
RAN: Aus 114 - Aus 117, DPI: WA 001

Capt A J Gray
Harbour Master
Fremantle Ports
2nd April, 2009