



**THIS NOTICE IS FOR THE INFORMATION OF SHIP'S  
MASTERS AND OTHERS CONCERNED**

**FREMANTLE PORTS NOTICE TO MARINERS  
5/2011**

**FREMANTLE PORT  
OUTER HARBOUR – AMC/Medina Channel  
New Mooring Buoys - Large**

*Date* – On or after 1<sup>st</sup> April, 2011.

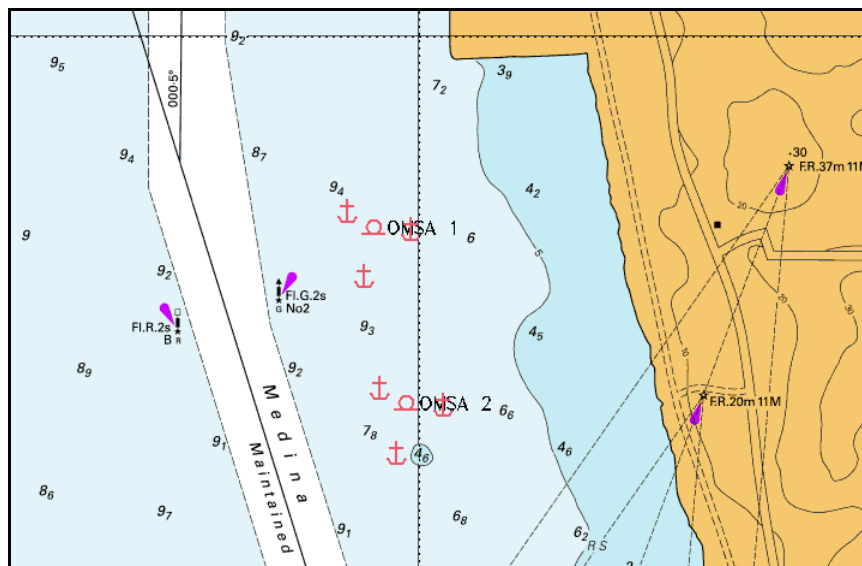
Two large mooring buoys, each with an all around flashing yellow light (range 2nm), will be placed approximately 0.5 nautical miles south of the Australian Marine Complex to the east of Medina Channel.

Positions for the buoys will be:

32 10.222 South  
115 45.940 East

32 10.420 South  
115 45.983 East

These buoys are to be used for barges using the AMC Complex with each mooring bouy having 3 large anchors deployed on the seabed as shown in the following chartlet.



A number of support and maintenance craft may be seen over time in the vicinity of the proposed locations moving and placing ground moorings in preparation for the new buoys. Commercial shipping movements will not be adversely affected by these operations.

It is envisaged that a Restricted Area to non authorized vessels within this area will be promulgated in the future (and promulgated via a separate NTM).

Mariners are advised to navigate with caution.

**Charts Temporarily Affected**  
**RAN: Aus 114 , Aus 117, DPI: WA 001**

Capt A J Gray  
Harbour Master  
Fremantle Ports  
25<sup>th</sup> March, 2011