



VOYAGER HELP SHEET

How do I
Add New Ship to Voyager

WEB

Steps

Screen Shots

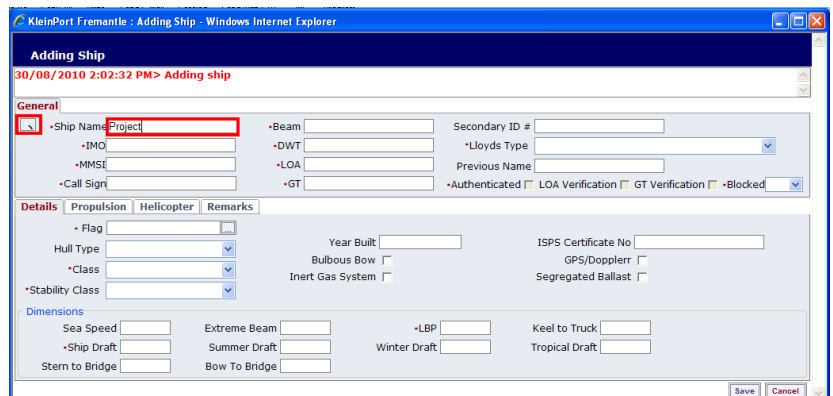
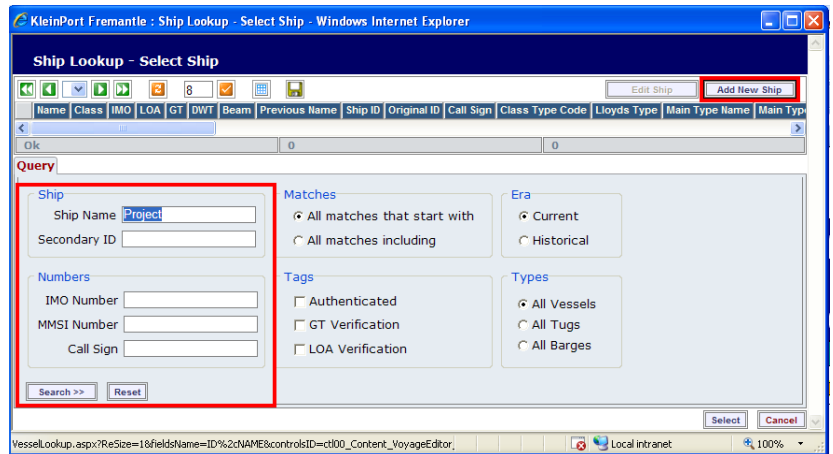
1. When entering in a new Visit to voyager and you find the ship visiting is not listed in the Voyager system follow the instructions below

2. Click the Ship 'lookup' button.

Type in the 'Ship Name' or 'IMO Number' and click search.

If the ship does not appear in the search results click on 'Add New Ship' button located on right hand side.

Click the magnifying glass which will take you to the **Lloyds Register** to search for the vessel.



Steps

Type in the **'Ship Name'** or the **'IMO Number'** and then click the search button. Select the ship you wish to add from the results grid (make sure you select the correct name with the matching IMO), then click on **'Select'**.

Screen Shots

Name	IMO	LOA	Gt	Dwt	Beam	Ship ID	Call Sign	Mmsi	Ship ...	Lloyd...
PROJECT 2300	6524371	214	0			6524371				
PROJECT 305	9586215	797	0			9586215				
PROJECT 900	7516852	98	0			7516852				
PROJECT AMERICAS	7900106	9019	12811			7900106	PJKN			
PROJECT EUROPA	8300250	9857	13493			8300250	PCBX			
PROJECT FEMCO	8012346	9019	10434			8012346				
PROJECT TRADER	8224547	1296	2500			8224547	A6E2986	470822000		

3. The ship details will be loaded to Voyager from the Lloyds register with the exception of the **'Stability Class'**, click on the drop down menu for Stability Class and choose from selection, then click on save.

Vessel will be automatically Authenticated.

30/08/2010 2:05:08 PM > Lloyds ship found and loaded.

Class: LANDING CRAFT

Stability Class: [Dropdown Menu]

Options: CAPESIZE, OTHER, PANAMAX

Once you save the vessel you will be able to search for the vessel in Voyager.

Remember  9430 3321

VOYAGER Customer Support if you need assistance