

FREMANTLE PORTS

Common-User Berths Victoria Quay



Common-User Berths - Victoria Quay



VICTORIA QUAY

Victoria Quay has six common-user berths with a design depth of 11 metres*. Four berths are used for cargo handling and two for vessel lay-up. Berths E to H are used predominantly for car carriers as well as cruise ships. Berths C and D are available for limited lay-up.

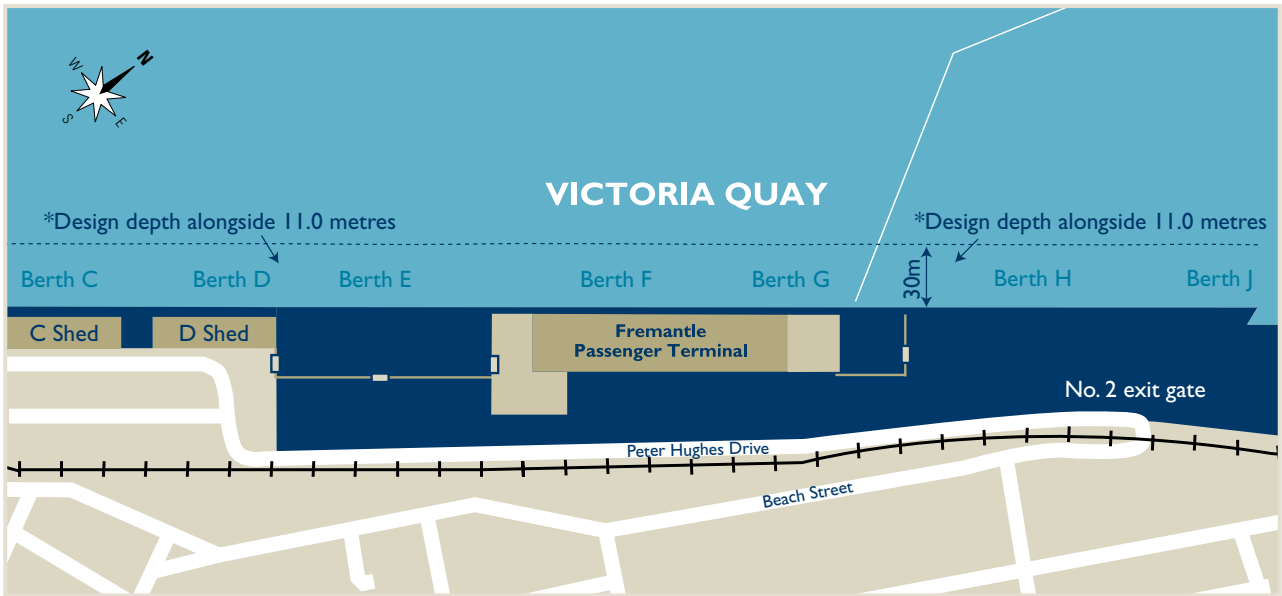
The Fremantle Passenger Terminal is located on Victoria Quay at F and G Berths. Mobile cranaage may be arranged through private operators.



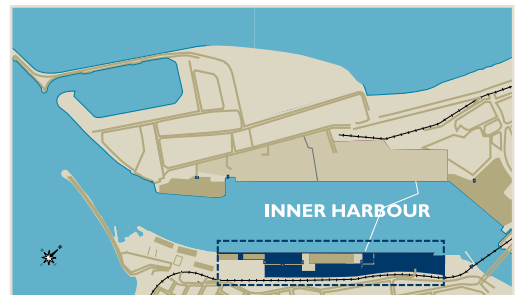
Berth*	Berth Length	Wharf Height	Stacking Area Available
C	198 metres	4.0 metres	-
D	176 metres	4.0 metres	-
E	230 metres	4.0 metres	19,000 metres ²
F	204 metres	4.0 metres	-
G	206 metres	4.0 metres	-
H	275 metres	4.0 metres	28,755 metres ² (including J Berth hardstand)

* The design depth alongside can be subject to siltation and variations to the depth displayed may occur. Enquiries should be directed to the Harbour Master's office to confirm depths alongside particular berths. All depths are related to Low Water Mark Fremantle being 0.2 metres below LAT.

The Port of Fremantle operates a Dynamic Under Keel Clearance (DUKC) program which nominates specific under keel criteria for applicable vessels. Enquiries should be directed to the Harbour Master's office to confirm maximum drafts for any given time.



Victoria Quay common-user area





FREMANTLE PORTS

1 Cliff Street FREMANTLE
Western Australia 6160

Tel: +61 8 9430 3555

Fax: +61 8 9336 1391

E-mail: mail@fremantleports.com.au

www.fremantleports.com.au

