

## **MINUTES OF THE INNER HARBOUR COMMUNITY LIAISON GROUP**

**Date:** 4 September 2018  
**Location:** Boardroom, Fremantle Ports Administration Building  
**Time:** 5pm to 6.30pm  
**Chair:** Chris Leatt-Hayter

### **Community representatives:**

**Maryrose Baker**, Fremantle Inner City Residents' Association (FICRA)  
**Rod Murray**, South Fremantle Precinct  
**Cr Andrew McPhail**, Town of East Fremantle  
**Don Whittington**, Fremantle Park Association  
**David Hawks**, The Fremantle Society  
**David Earl**, Fremantle Arts Centre Precinct  
**Gerry MacGill**, North Fremantle Precinct  
**Cr Jon Strachan**, City of Fremantle  
**Robert Potts**, Beaconsfield Precinct  
**Olwyn Williams**, Fremantle Chamber of Commerce

### **Fremantle Ports' representatives**

**Chris Leatt-Hayter**, Chief Executive Officer  
**Alison Coates**, A/General Manager Strategy and Planning  
**Ainslie de Vos**, Manager External Affairs  
**Jeanette Murray**, External Affairs Coordinator  
**Vanessa Carn**, Administrative Assistant

### **Apologies**

**Ron Kawalilak**, Gibson Park Precinct  
**Carol Shannon**, Leeuwin Ocean Adventure Foundation  
**Eric Wilson**, Port Beach Users Group and Polar Bears  
**Dr Simon Avenell**  
**Cr Jenny Harrington**, Town of East Fremantle  
**Gill Harrison**, WA Museum  
**Michelle Reynolds**, Rottnest Island Authority

## **1. WELCOME, APOLOGIES AND INVITATION FOR AGENDA ITEMS**

Chris Leatt-Hayter welcomed all, announced apologies and called for additional agenda items. Minutes of the previous meeting on 29 May 2018 had been circulated and were accepted.

Action from previous meeting: Sunset Events/J Shed to be discussed. See Item 2.

General business: Gerard MacGill: Port Beach. See Item 5.

## **2. J SHED/SUNSET EVENTS**

Members advised: At its meeting on 28/8/18, WAPC refused the application from Sunset Events for a proposed tavern at Lot 2051 Fleet Street, Fremantle.

## **3. TRADE UPDATE/CRUISE**

Information provided by Chris Leatt-Hayter:

- Inner Harbour trades: The container trade grew by 7% in 2017-18; both imports and exports up 7%; scrap metal/steel up and the motor vehicle trade up more than 10%. Live sheep trade decreased significantly; no sheep exported for a number of months.
- Cruise news (see presentation slides attached).

## **4. VICTORIA QUAY UPDATE**

Information provided by Chris Leatt-Hayter: Planning greater activation of VQ. Short term (December to March) there will be The Dock bar plus a range of other family friendly events. Longer term: looking to work with the City of Fremantle; better linkage needed between Fremantle Passenger Terminal and railway station.

## **5. PORT BEACH EROSION**

Information provided by Ainslie de Vos:

- Fremantle Ports has pledged \$28,000 in relation to two City of Fremantle grant applications to the Department of Transport.
- Fremantle Ports will provide up to \$20,000/year for next few years for beach clean up (inspection and removal of rubble and building debris, rocks, etc.)
- Working group established with representatives from City of Fremantle, Fremantle Ports, the Department of Transport, Department of Lands, Planning and Heritage and Dept of Water and Environmental Regulation on the port beach erosion issue to assist in developing future management strategies.
- Fremantle Ports has engaged specialist coastal and port engineers to review available documents, reports and photographs related to the Port Beach issues and to deliver timeline summaries of relevant and key information.

Discussion:

- Cr Jon Strachan said recent storms had taken out a lot of dune sand; as sea level was rising (60-70cm), beach erosion was getting worse; SW winds eroded the beach and NW winds brought sand back, and there had been a greater proportion of SW winds this winter.
- Gerry MacGill said there should be a greater sense of urgency about fixing the beach erosion and previous studies should have been acted on.
- Chris invited Gerry and Eric Wilson to meet with Fremantle Ports, City of Fremantle and MP Rogers representatives to go through the latest MP Rogers report. **Action:** Meeting to be organised.

## **6. COMMUNITY CONTRIBUTION**

Information from Ainslie de Vos: See presentation slides attached.

## **7. LOSS MANAGEMENT**

Information from Alison Coates: See presentation slides attached.

## **8. GENERAL BUSINESS**

- Chris Leatt-Hayter noted that this meeting was Ainslie de Vos's last meeting with the group as she would be retiring at the end of October. Ainslie was involved with the establishment of the IHCLG and has attended meetings since it began. A number of members thanked her for her immense contribution.

**Action:** Meeting to be organised with Gerry MacGill, Eric Wilson and Fremantle Ports, City of Fremantle and MP Rogers representatives to discuss the latest MP Rogers report on Port Beach.

**Conclusion:** Meeting concluded at 6.20pm.

**Next meeting:** 5pm Tuesday 20 November 2018, Fremantle Ports Administration Building

# CRUISE NEWS



Fremantle Passenger Terminal  
\$3 million refurbishment



North side  
(wharf side) painting completed and  
flagpoles in place



South side: Painting completed and new sign with lighting; canopy being added





New F and G shed signs





Work being completed before *Sea Princess* visit on 11 October



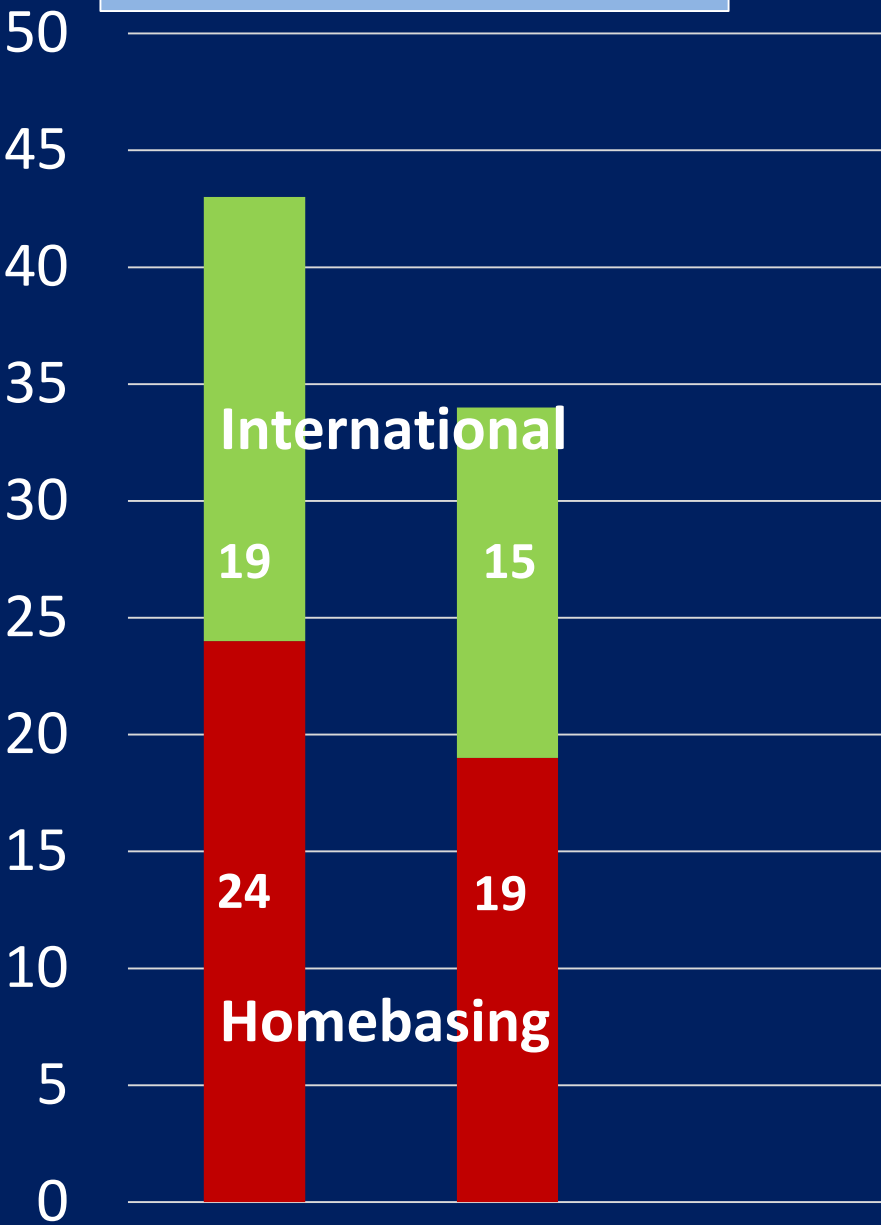
Foyer refurbishment





*Ovation of the Seas* returning 25 October

Cruise ship visits  
2017-18 and 2018-19





# 34 visits, 18 individual ships in 2018-19

## International (15)

Ovation of the Seas

AIDAaura

Seabourn Sojourn

Regatta

Maasdam

Seven Seas Mariner

Queen Elizabeth

Amadea

Crystal Serenity

Celebrity Solstice

Silver Muse

Pacific Eden

MSC Magnifica

Viking Sun

## Homebase (19)

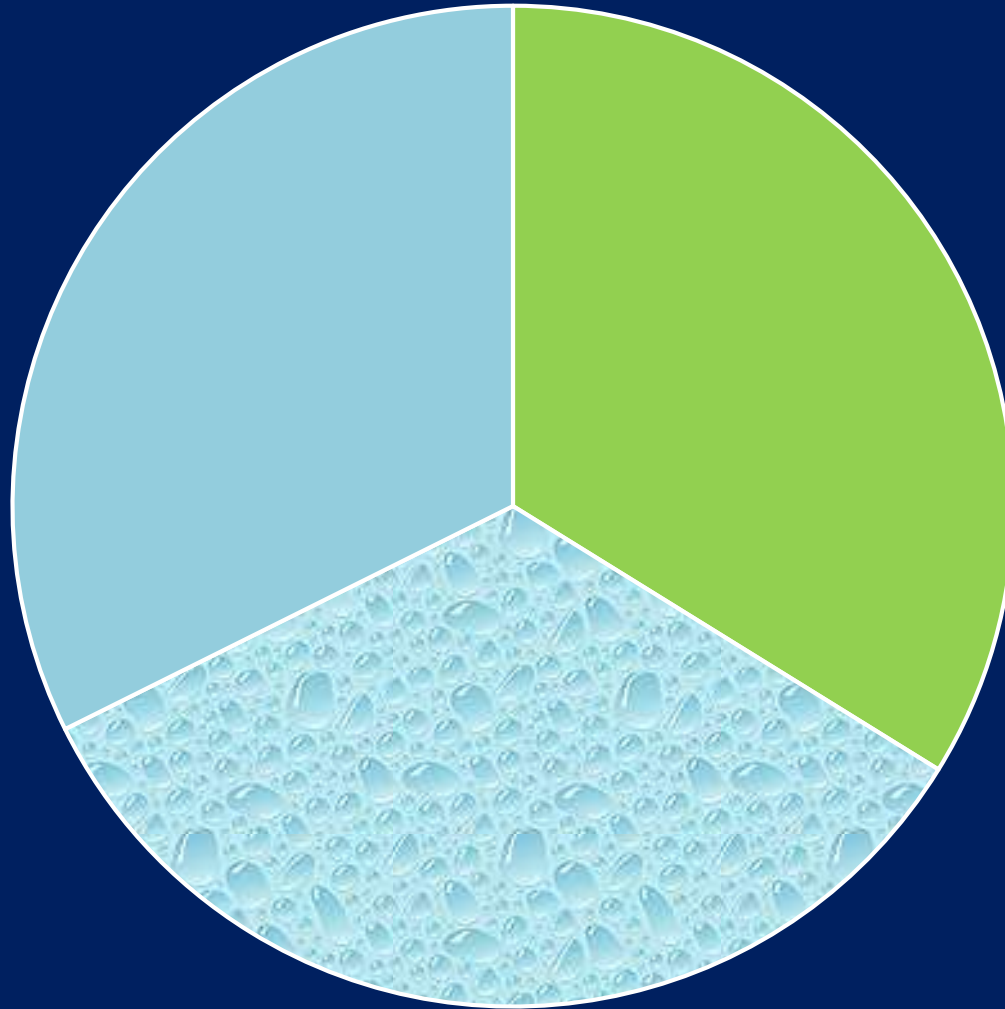
Astor (13)

Sea Princess (2)

Sun Princess (4)



# Cruise passengers (est.) 2018-19



■ Transit (23,000)

■ Disembarking (23,000)

■ Embarking (22,000)

# COMMUNITY CONTRIBUTION



Workplace giving partnerships



# Employee workplace giving and volunteering program 2017-18

- More than \$21,000 given to two not-for-profits
- 50 Christmas hampers for St Patrick's Community Care Centre
- 335 books donated to Paint Kwinana REaD
- 206 hours of volunteering for OzHarvest: Cooking for a Cause, Guide Dogs WA and St Patrick's Community Care Centre.

Workplace  
giving to  
Guide Dogs  
WA (\$11,528)







Workplace  
giving to  
Paint  
Kwinana  
REaD  
(\$10,427)



## Workplace giving partners 2018-19:

- Native ARC (Animal Rescue Centre), Bibra Lake
- Perth Children's Hospital Foundation



# Visitors: Fremantle Christian College students



# Belridge Secondary College students





# Miri Port delegation visit





Harbour Master and General Manager Port Operations at Fremantle Ports, Captain Allan Gray has been elected President of the International Harbour Masters' Association.





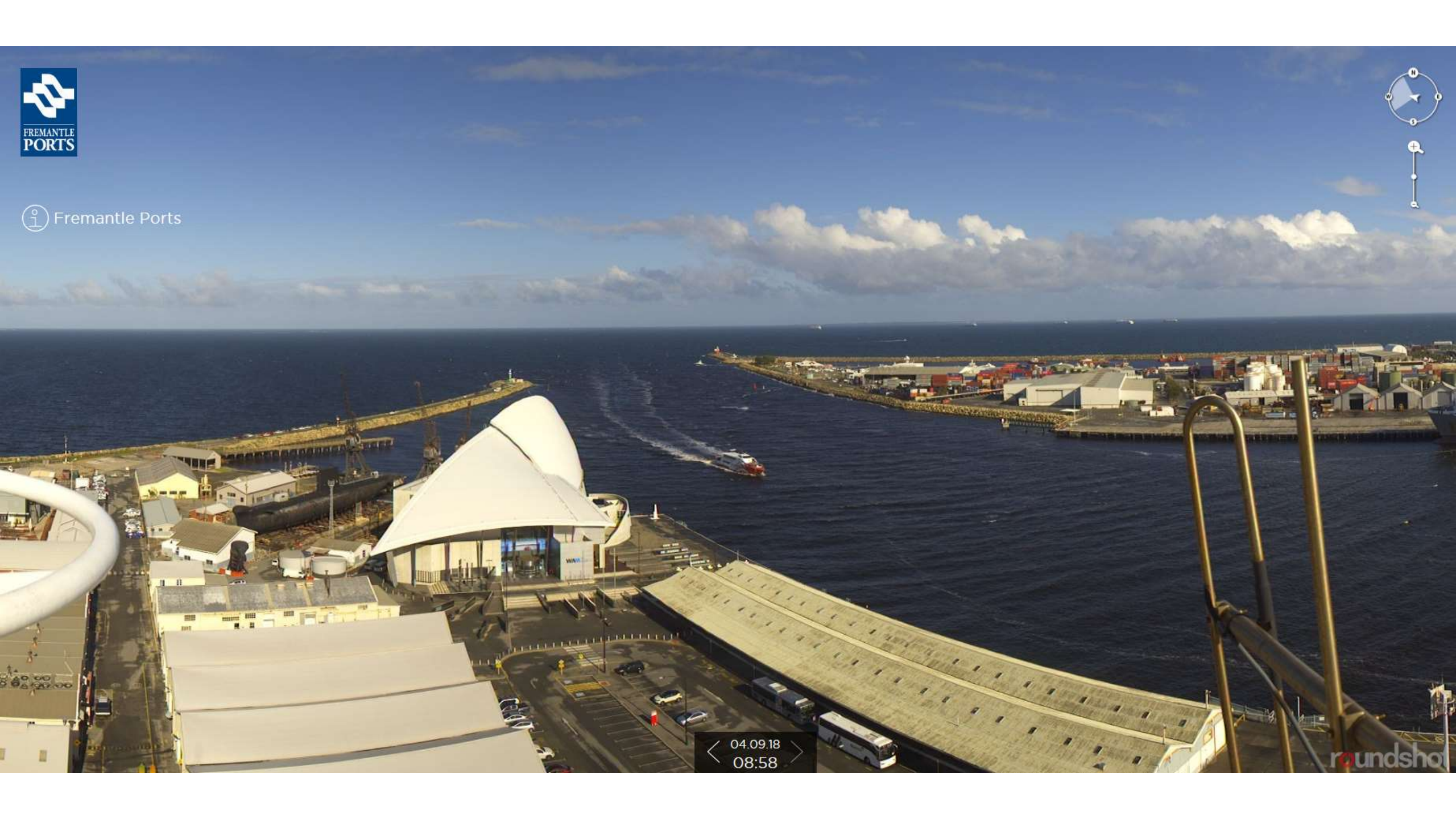
**New harbourcam installed on top of  
signal station**







 Fremantle Ports



< 04.09.18  
08:58 >

roundshot





**Come and see 'big toys', boats and displays!**

# Maritime Day

**Fremantle Port | Saturday 27 October | 10am - 4pm**



**Enjoy an  
action-packed  
day with  
friends and  
family!  
FREE ENTRY**





# Maritime Day Saturday 27 October 2018

## Come down to Victoria Quay

- Meet an Australian Border Force detector dog and new patrol vessel
- Attend the naming ceremony of a new Svitzer tug (10am)
- Explore tugs and an emergency response vessel
- See the Royal Australian Navy clearance dive team display, knot tying, weapons and full firefighting and survival equipment
- Take a free harbour ride
- Kids! Dress up as a mermaid, pirate or fish and join our dress-up parade. Have your face painted.

- Learn to use your smartphone as a microscope and discover tiny sea creatures
- Enjoy our historic and modern photographic display
- Visit the WA Maritime Museum (gold coin entry)
- Enjoy a full program of musical entertainment

Celebrate the maritime industry at our working port. Learn about maritime education opportunities and exciting careers.

---

For more information,  
contact Jane Edwards on  
**9430 3373**, or email:  
[Jane.Edwards@fremantleports.com.au](mailto:Jane.Edwards@fremantleports.com.au)  
[www.facebook.com/MaritimeDayAtFremantlePorts/](http://www.facebook.com/MaritimeDayAtFremantlePorts/)



**SVITZER**

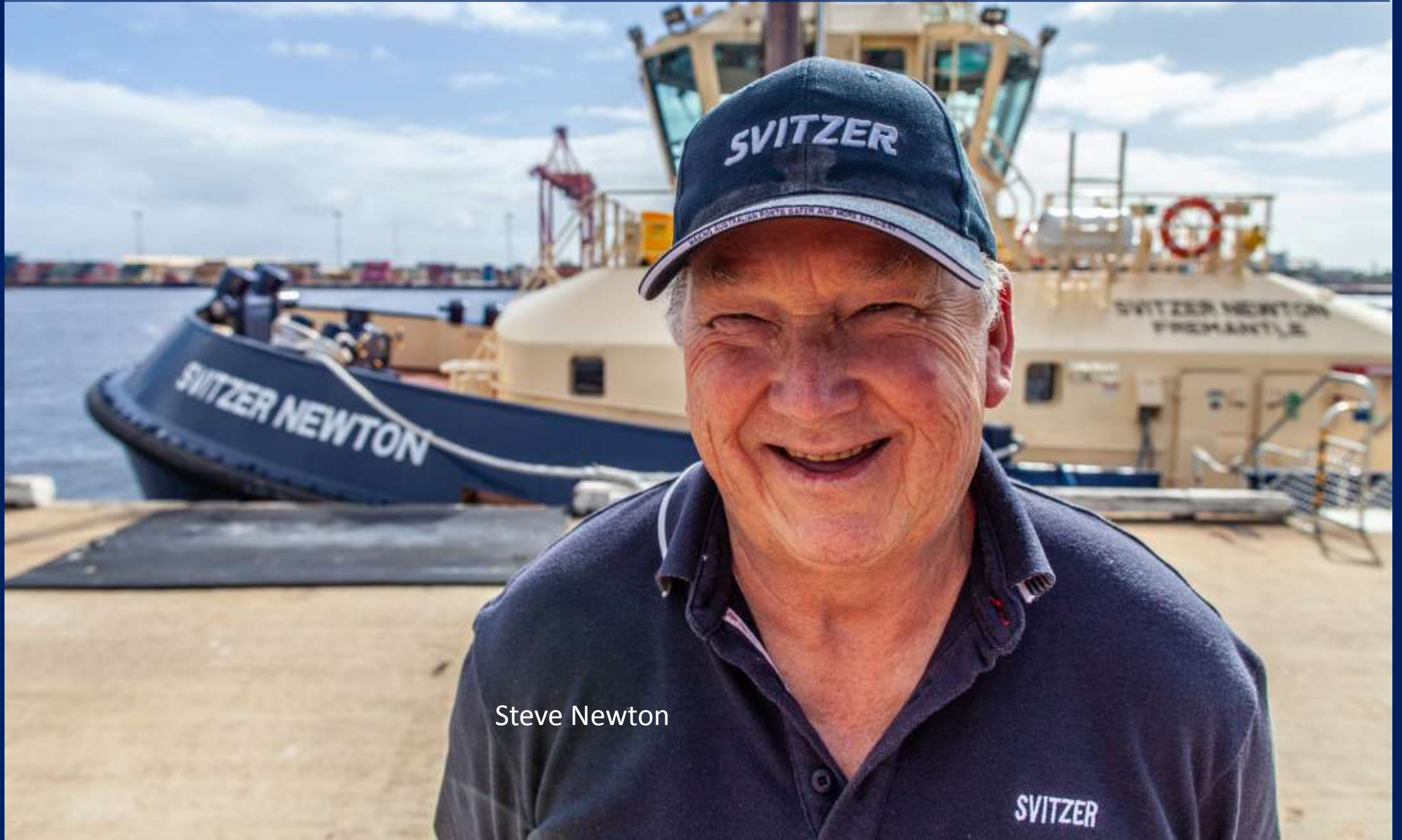


Department of  
Transport





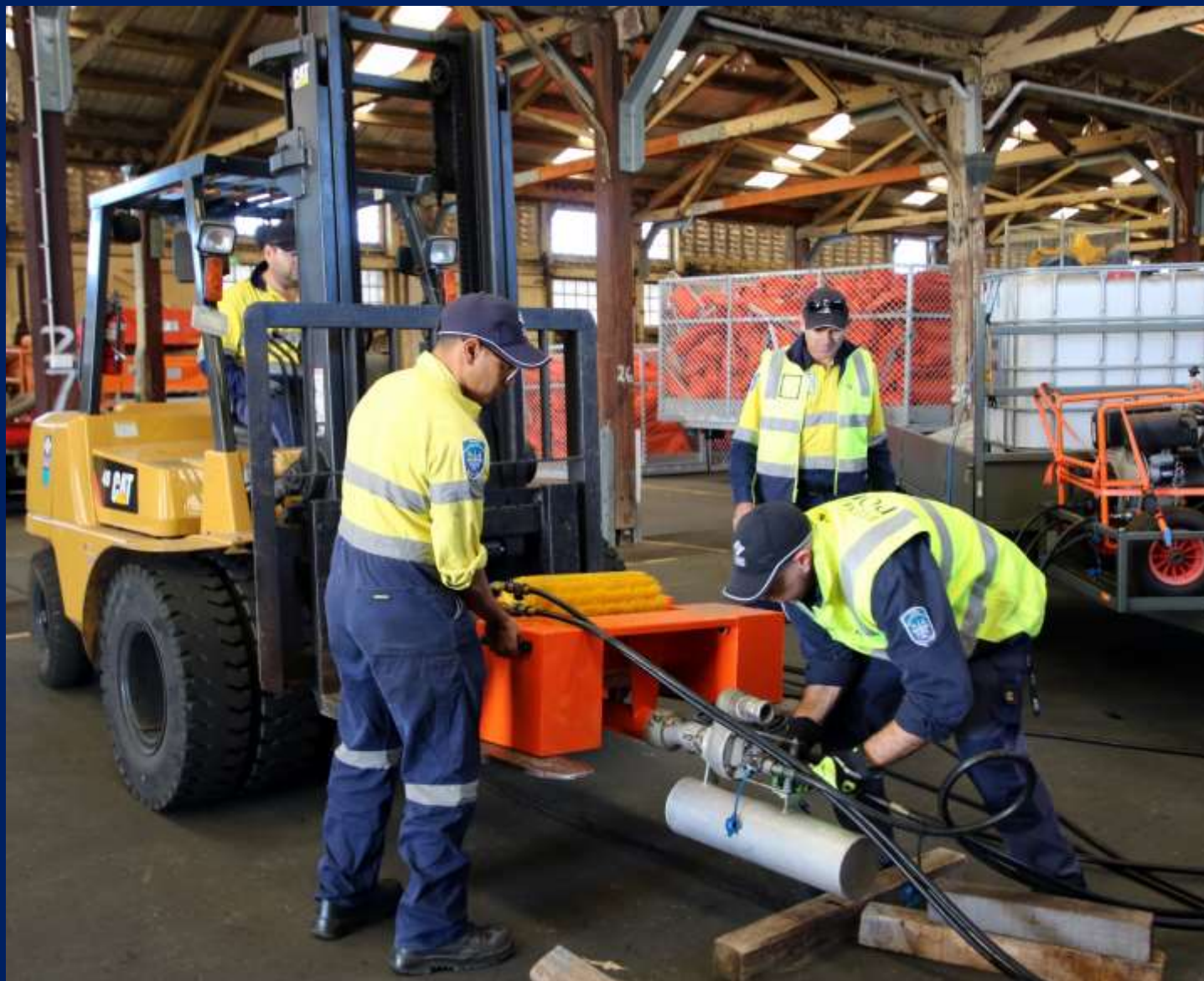
# Naming ceremony for *Svitzer Newton* at 10am



Steve Newton

SVITZER





# Fremantle Ports Loss Management Report June – August 2018

# Purpose of Report

- Communication of significant incidents, complaints and improvements relating to Inner Harbour operations and that may be of interest to Community Liaison Group members
- Integrated approach records and reports on safety, environmental and quality issues
- Opportunity for identification of any unreported incidents, other complaints or suggestions for improvement



# Incident: Coolant spill at container terminal – 21 August 2018

## Report

Container terminal reported to Fremantle Ports and DWER 800L coolant spill in maintenance yard; some coolant believed to have migrated to stormwater drain.

## Response

Faulty ball valve identified. Tank replaced with IVC unit with new trigger-operated valve and relocated to bunded area.



# **Incident: Refueling pipeline hazard – 3 August 2018**

## **Report**

Complaint from anonymous person that sections of refueling pipeline were left under Victoria Quay wharf by fuel company after removal project was completed.

## **Response**

Fremantle Ports forwarded complaint to fuel company for follow up. Fuel company has had dive inspections take place and some pipes were found. Fremantle Ports will ensure that project is completed.



# **Complaint: Fishing Facebook sites re: North Mole – 5 June 2018**

## **Reports**

Person alerting Fremantle Ports to Facebook sites Fishing Perth and WA - Land based where people are talking about walking around closed gates at North Mole and saying Fremantle Ports doesn't care if they do.

## **Response**

Replied to person thanking them for information and saying security patrol would be alerted to people walking around gates. Manager in charge of security patrol advised.

# **Incidents: Fishers on North Mole after gate was closed – 5 June, 5 & 23 July 2018**

## **Report**

On three occasions recently Port Services patrols found people fishing from rocks at North Mole when the gate was closed due to bad weather. They had clambered over the rocks to get past the gate.

## **Response**

Port Services officers spoke to fishers, explained that North Mole was closed to the public, asked them to leave and escorted them out of the area. Some people complained about having to leave.



# **Incident: Dangerous cargo management – 20 July 2018**

## **Report**

Container ship readying to depart when chief officer reported to terminal manager dangerous cargo container onboard was leaking unknown substance.

## **Response**

Emergency response initiated. DFES attended, going onboard with detection equipment. DFES reported no leaks detected, gave all clear and vessel departed.

# **Incident: White plume in harbour – 10 July 2018**

## **Report**

Port Services officer noticed white plume coming from under B Berth.

## **Response**

Investigated and found painters in Leeuwin Ocean Adventures Foundation office were washing paint gear in workshop sink. Sink was draining into harbour. Paint cleaning was stopped. Legacy infrastructure issue; investigation to fix it; meantime education/liaison with Leeuwin.



# **Complaint: Continuous alarm noise from port – 29 August 2018**

## **Reports**

Resident in North Fremantle (just north of Tydeman Road) complained of siren sounding for a couple of hours during high winds from about 6pm on 29 August.

## **Response**

Contacted one of the container terminals and confirmed that the alarm was a safety measure and alert. The container terminal crane alarms are set to go off at 70 kmph and they stay on while the wind is above that speed. During the time in question the wind was gusting above 100 kmph and work was stopped but the alarm stayed on. The terminal safety policy is to not turn off the alarms. Explained this to resident who said that if it was a necessary safety measure 'then so be it'.

# **Complaint: New colour scheme at Fremantle Passenger Terminal – 22 June 2018**

## **Reports**

Complaint about new colour scheme – blue trimming should be dark grey; ‘nappy yellow’ of ground floor still very ugly.

## **Response**

Reply: Architects were engaged by Fremantle Ports on the terminal refurbishment, including the exterior colour scheme; painting scheme referred to the State Heritage Office for approval. The dark blue trim will tie in with new signage. The large doors that were previously an orange colour have been repainted to work in with the brownish colour of the precast exposed aggregate panels at ground-floor level. These textured panels, an essential part of the design of this building, will remain as they were intended to be in this heritage-listed building i.e. unpainted.



# **Complaint: Fremantle Passenger Terminal signage and security – 6 June 2018**

## **Reports**

Cruise ship passenger complained about perceived lack of signage directing people walking from terminal to ferry terminal on Victoria Quay. Also said there appeared to be no security presence at the ferry terminal when there were many people in the area.

## **Response**

Reply: Comments drawn to attention of terminal manager to see what further opportunities there were for wayfinding signage. Assured person security personnel are on duty 24 hours a day.

## Fremantle Passenger Terminal (cruise ships) Victoria Quay

- ➡ Fremantle bus & train station 10 min
- Victoria Quay (Ferry Terminal & E-Shed Markets) 12 min
- Fremantle Visitor Centre 12 min
- City Centre 12 min
- Fremantle Arts Centre 13 min
- Fishing Boat Harbour 19 min



Wanjo Nidja Walyatup - Whadjuk Boodja. Welcome this is Fremantle - Whadjuk Land



## Signage at Passenger Terminal



In front of  
terminal  
building



Just outside  
terminal gate

## Victoria Quay

Peter Hughes Drive

- ➡ Fremantle bus & train station 7 min
- Victoria Quay 10 min  
(Ferry Terminal & E-Shed Markets)
- WA Maritime Museum 11 min
- ➡ City Centre via footbridge 10 min
- Fremantle Visitor Centre via footbridge 11 min
- Fishing Boat Harbour  
& Bathers Beach via footbridge 17 min



Wanjo Nidja Walyatup - Whadjuk Boodja. Welcome this is Fremantle - Whadjuk Land







**CMA CGM *Bellini* departing 4 July with  
Svitzer *Eagle* (left) and *Newton***