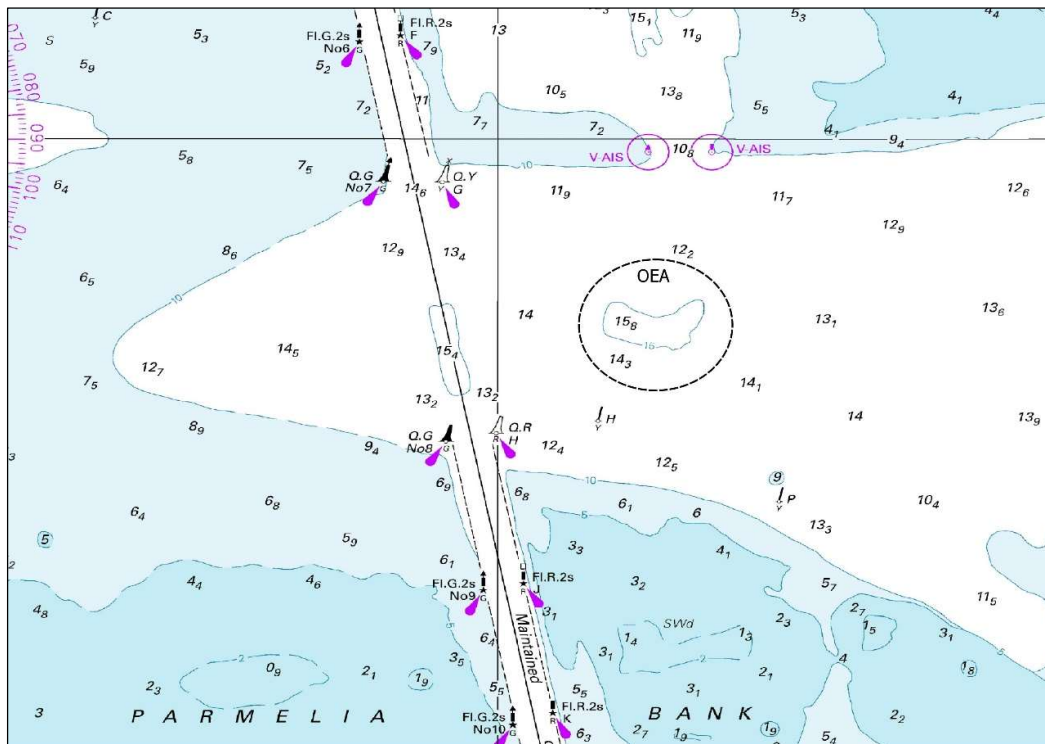


## FREMANTLE PORTS NOTICE TO MARINERS

### 3/2023 Issued 06/07/2023

### OWEN EMERGENCY ANCHORAGE

Emergency anchorage OEA has been established east of Success and Pamela Channel as detailed in chartlet below. The new anchorage has a swing radius of 300m centered around 32° 6.4625' S, 115° 42.3931' E (WGS84).



Fremantle VTS will inform vessels of anchorage designation.  
 Mariners are advised to navigate with caution.

**Charts Permanently Affected**  
**RAN: Aus 117;**  
**DoT: WA 001**

Captain Savio Fernandes  
 Harbour Master  
 Fremantle Ports