



WESTERN AUSTRALIAN
PORT OPERATIONS
TASKFORCE

Papers - July 2018

WA Port Operations Taskforce

1. [Meeting Overview - July 2018](#)
2. [Agenda](#)
3. [WA Port Operations Taskforce: Report from Fremantle Ports](#)



Meeting Overview - July 2018

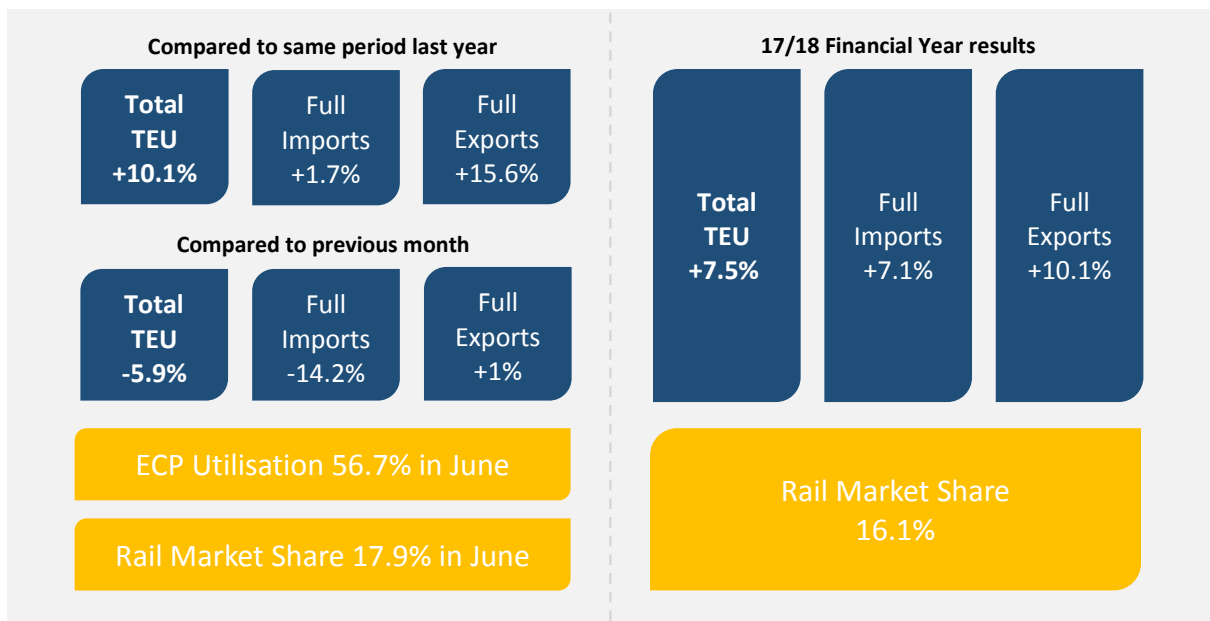
Key points of discussion

- Highest level of trade ever recorded in 17/18 FY, as well as a record year for rail
- Strong forecasts for rail and successful meeting with PTA to lock in 3 trains to/from FF per day Monday to Friday
- Peak Season Working Group to commence discussions in coming weeks
- WAPOTF members encouraged to get involved more actively in the Westport Taskforce press to ensure that transport concerns are raised and land is protected
- MUA providing resources to develop of report on the OH - get in touch to be involved
- New cranes on order for both container terminals
- OSOM group (oversize, overmass) winding down, with some reported issues for businesses getting permit. Members to advise of any issues.
- Maersk have stopped direct dehires for the time being
- MUA holding community forum on August 29, members to advise MUA if they want to be involved
- Members advised to be aware of detention charges being charged despite additional free time being provided by the shipping line. Shipping line invoice should be requested to ensure detention charges are valid. Taskforce to raise it with Shipping Australia.

Actions

- Consider letter from Taskforce to Government on various industry issues, including short-term development of IMTs and truck permit issues
- Taskforce to raise issue of incorrect detention charges with Shipping Australia
- Members to advise MUA of interest in being involved in OH study or community forum

Trade and statistics - June (preliminary only)





Agenda

WA Port Operations Taskforce
July 2018

Thursday, 5 July 2018
8:00am-10:00am
Fremantle Ports

-
- Chairperson** • Graeme Wilson
Executive Officer • Sophie Gillespie
- Next Meeting** • Thursday, 2 August 2018
-

Agenda

8:00am	Welcome, opening comments and apologies	Graeme Wilson
8:05am	Confirmation of last month's minutes	Graeme Wilson
8:10am	Trade statistics overview	Sophie Gillespie
8:15am	Round table	All
	<ul style="list-style-type: none">• Container terminals• Empty container parks• Rail• Shipping Australia• Western Road Federation• Transport operators• Unions• Customs brokers/freight forwarders• CBFCA• Australian Border Force• Department of Agriculture & Water Resources• Main Roads WA• Freight & Logistics Council• Fremantle Ports	
9:55am	General business and meeting close out	All

Attendees: ACFS Port Logistics, Australian Border Force, CBFCA, CC Containers, Department of Agriculture and Water Resources, DP World, Fremantle Ports, ICL, Intermodal Group, JD Container Logistics, Lou Valsecchi & Associates, Maritime Union of Australia, ORPS, Patrick Terminals, Qube Logistics, WA Transport Workers Union

Apologies: Department of Transport, EES Shipping, Freight and Logistics Council WA, Superscoop Transport, Stevenson Logistics, Toll Global Express, Visa Global

WA Port Operations Taskforce: Report from Fremantle Ports

Meeting Date: 5 July 2018

1. Trade Statistics

Monthly Results

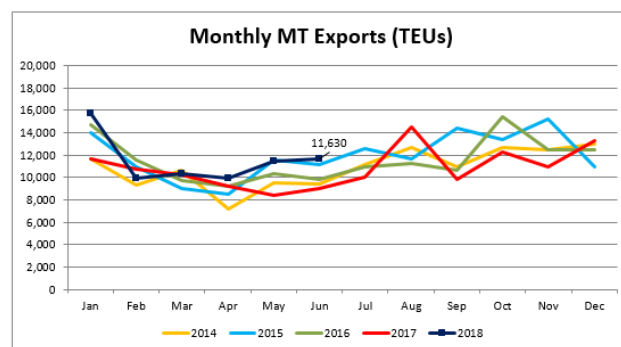
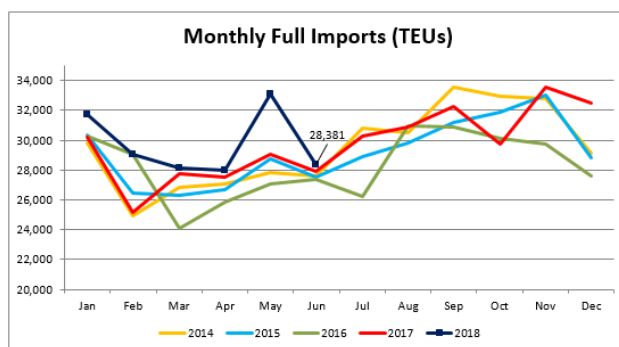
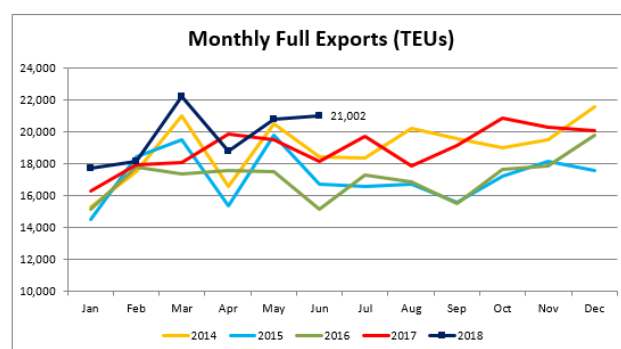
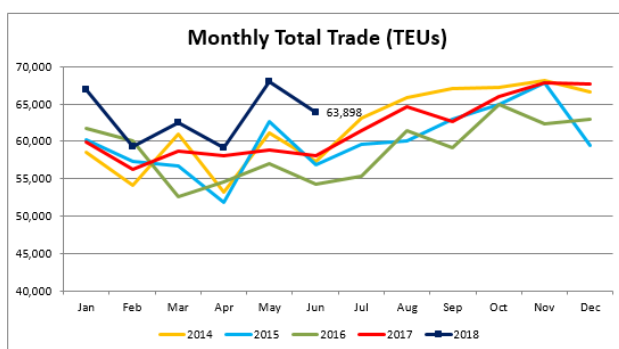
Total trade was up 14.9% in May compared to the same period last year. Loaded imports were up 13.9% and loaded exports were up 6.6%.

Based on preliminary statistics, total trade was up 10.1% in June compared to the same period last year. Loaded imports were up 1.7% and loaded exports were up 15.6%.

Total trade for the 17/18 financial year (based on preliminary statistics) was 7.5% higher than 16/17, with loaded imports up 7.1% and loaded exports up 10.1%. Final statistics for the financial year will be provided in the August report, however estimates indicate record TEU throughput with approximately 769,765 TEU were handled through the port.

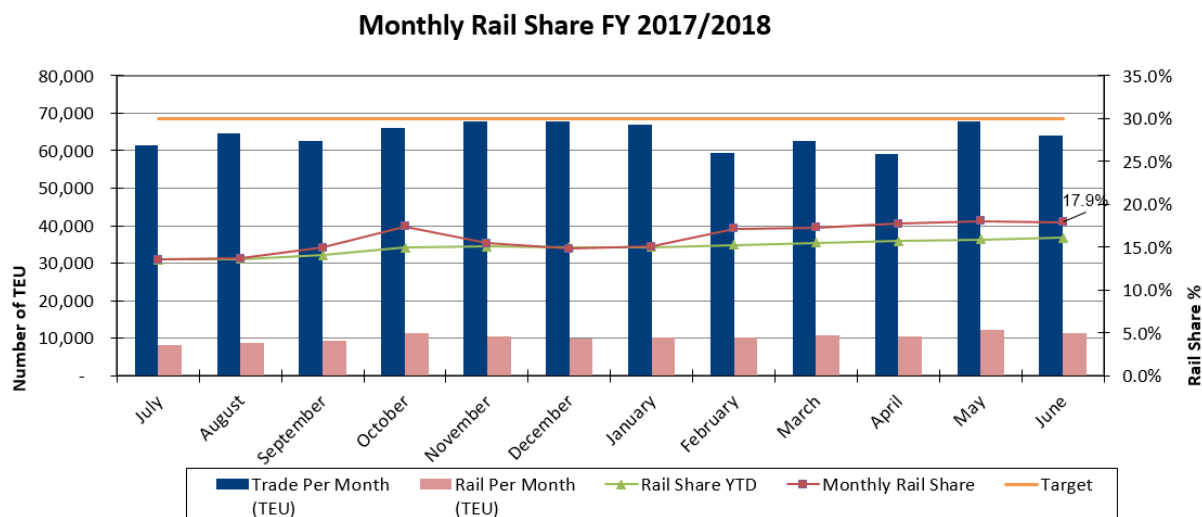
There were 46 container vessel visits in May and 42 in June.

May-18	TEU	Variance to 2017	YTD Variance to FY16/17	Variance to previous month	Containers	Variance to 2017
Total	67,932	15.5%	7.3%	14.9%	45,643	13.5%
Loaded Imports	33,088	13.9%	7.6%	18.2%	22,125	13.2%
Empty Imports	2,613	41.5%	1.1%	9.7%	1,769	33.6%
Loaded Exports	20,801	6.6%	9.6%	10.8%	14,707	5.1%
Empty Exports	11,430	36.2%	4.0%	14.9%	7,042	31.6%
Jun-18	TEU	Variance to 2017	YTD Variance to FY16/17	Variance to previous month	Containers	Variance to 2017
Total	63,898	10.1%	7.5%	-5.9%	43,064	8.5%
Loaded Imports	28,381	1.7%	7.1%	-14.2%	19,091	1.0%
Empty Imports	2,885	-1.2%	0.8%	10.4%	2,184	-6.0%
Loaded Exports	21,002	15.6%	10.1%	1.0%	14,969	16.1%
Empty Exports	11,630	28.4%	5.6%	1.7%	6,820	22.2%



2. Rail Services

Rail recorded a high market share again in June, with 17.9% of TEUs being handled by the service. Total TEU handled by the service in the 17/18 financial year was a record number of around 123,750 TEU. Based on preliminary trade statistics, rail accounted for 16.1% of total TEUs for the 17/18 financial year, which is the highest share recorded since the service commenced.



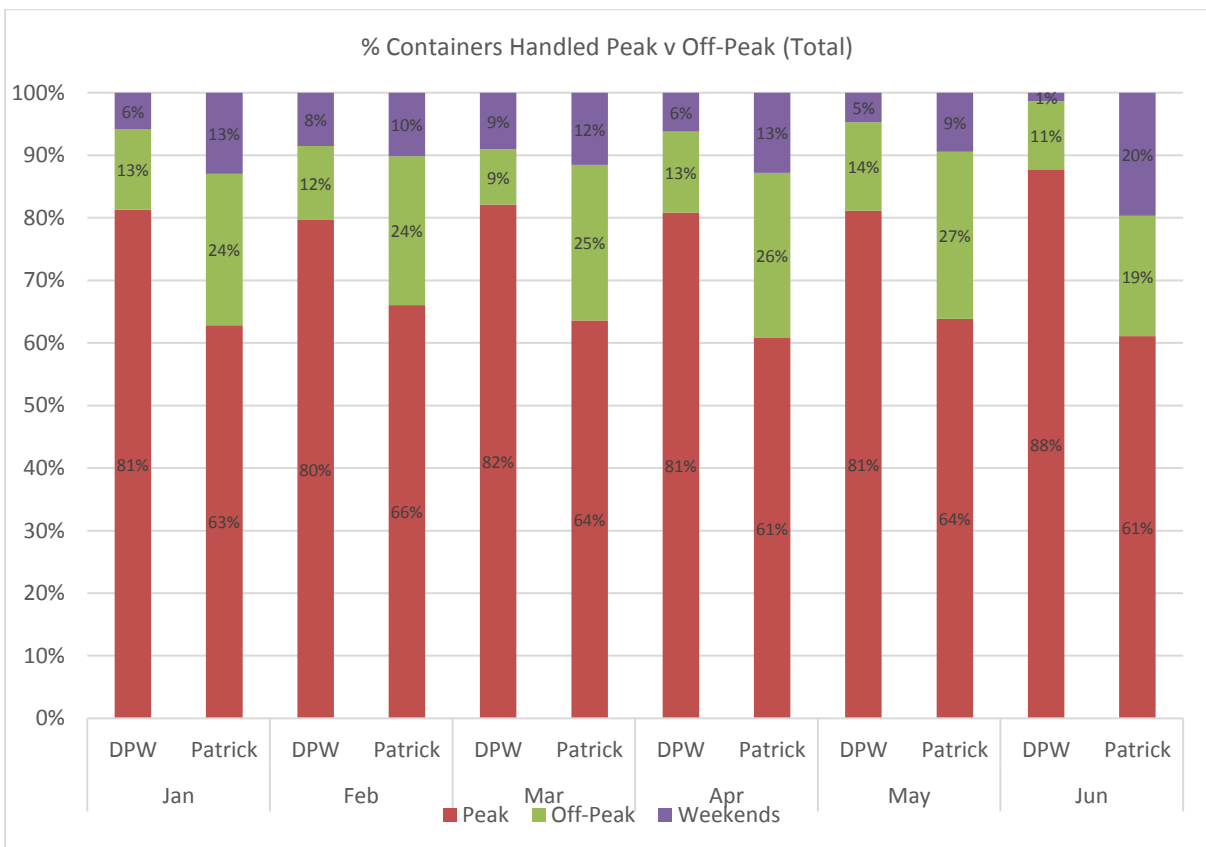
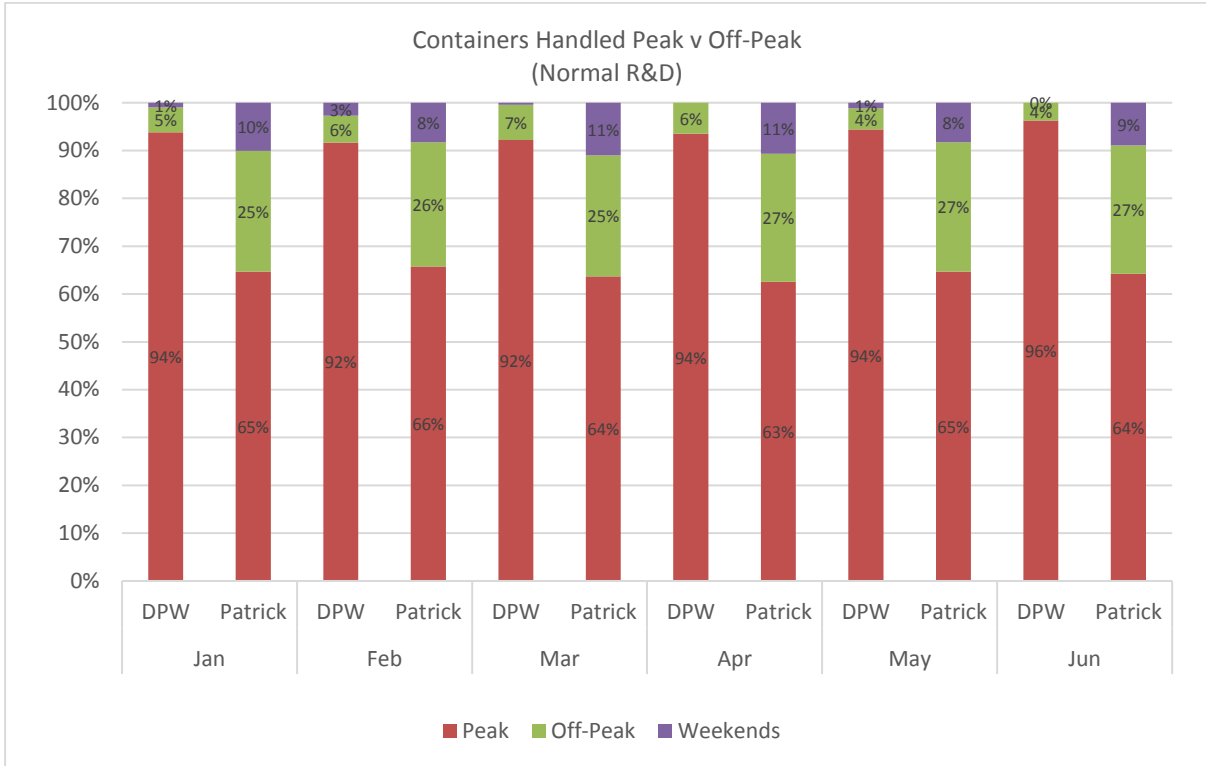
3. Empty Container Parks: ECP stocks and capacity utilisation

Container Parks' stocks, as recorded on the 15th of each month, are shown in the table below. Overall stocks in June were at 56.7%, up slightly from 55.1% in May.

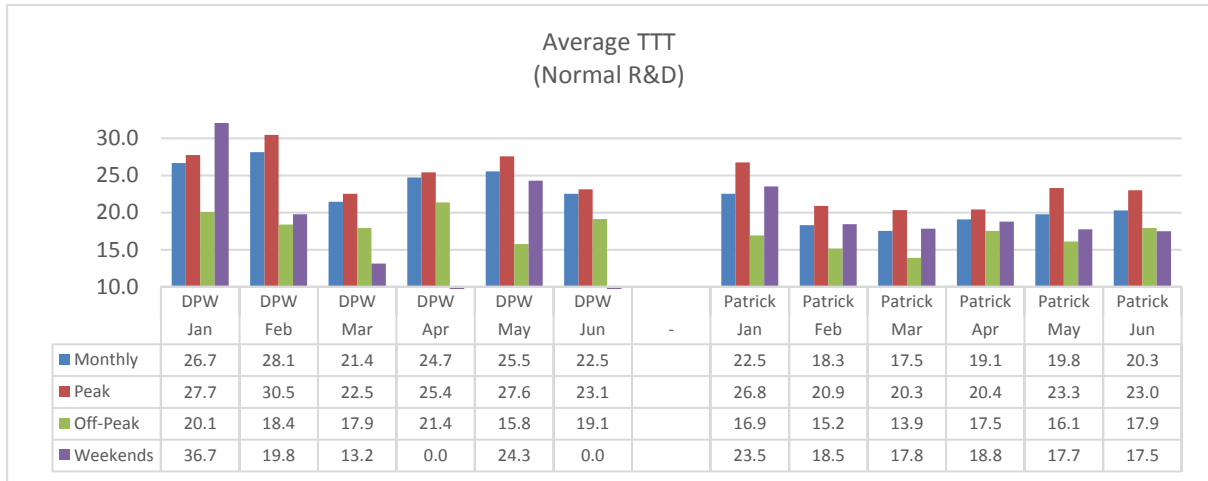
June 2018	Current Month						
	Capacity (TEU)	Holding 20'	Holding 40'	Holding TEUs	% Utilisation	Share of Total Capacity	Share of Total Holdings
QUBE Container Park	7,500	2,288	1,708	5,704	76.1%	30.1%	40.4%
QUBE Central	5,850	943	1,002	2,947	50.4%	23.5%	20.9%
Tyne-ACFS	6,147	624	410	1,444	23.5%	24.7%	10.2%
ICL 1	1,100	231	153	537	48.8%	4.4%	3.8%
ICS (Forrestfield)	2,600	970	651	2,272	87.4%	10.4%	16.1%
Patrick Cargolink	1,700	49	577	1,203	70.8%	6.8%	8.5%
Total Container Parks	24,897	5,105	4,501	14,107	56.7%		

4. 1-Stop Container Terminal Statistics

i. Containers handled peak v off-peak



ii. Truck turn time (TTT) - R&D only



iii. Container turn time (CTT) - R&D only

