

**Date of issue:** 17.04.2024

**Date of effect:** 17.04.2024

**Date of cancellation:** 30.04.2025

**Charts affected:** AUS 117

## **Scientific equipment - Cockburn Sound Vicinity**

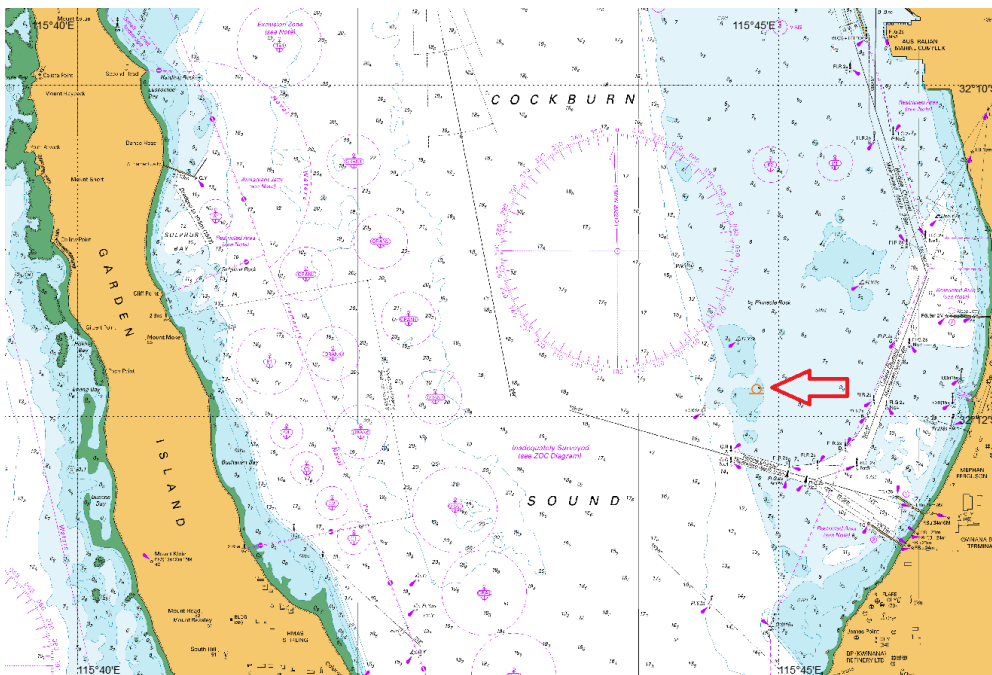
Mariners are advised that twenty-four subsurface scientific instruments are deployed in Cockburn Sound within 40 metres radius of 32° 11.86'S,

115° 44.84'E The area is marked with 4 lit buoys.

The scientific equipment, 'plots', will have 4-star pickets with shade cloth. All plots are approximately 1 meter in height and will provide variable clearances to the surface of the water at LAT (Lowest Astronomical Tide) to be around 3-4 metres.

The above instruments will be deployed as part of the WAMSI Westport Research Projects.

**Mariners are advised to navigate with caution when transiting the area.**



**Harbour Master's Office  
Fremantle Ports**