

# FREMANTLE PORTS

## 2016 OUTER HARBOUR WATERS PLANNING POLICY

PLANNING BRANCH



# FREMANTLE PORTS OUTER HARBOUR WATERS PLANNING POLICY

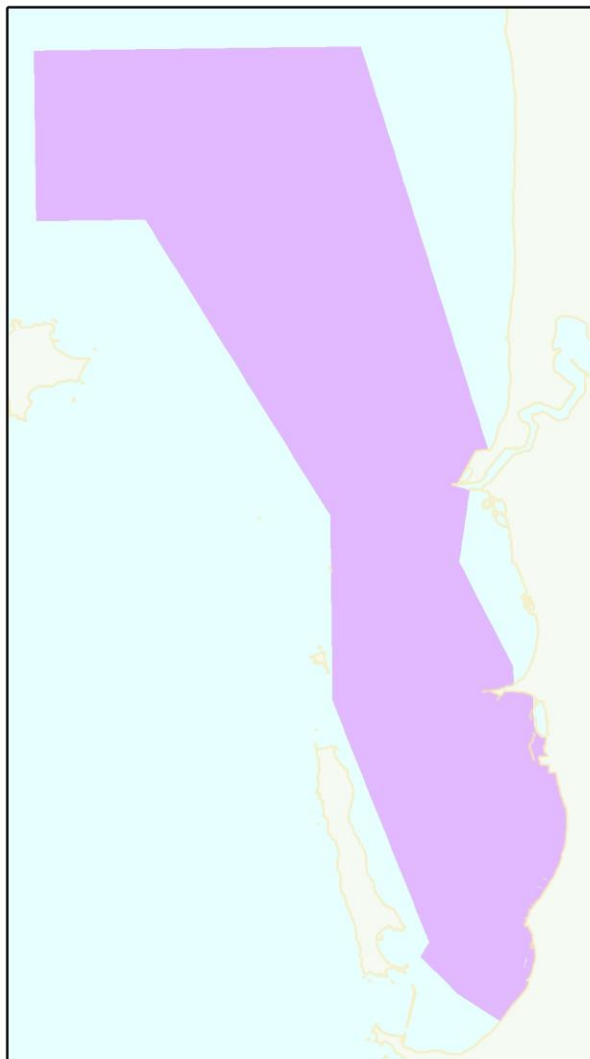
## INTRODUCTION

The Outer Harbour Waters accommodate a range of port functions, all of which are critical to the State of Western Australia. The continuing use of the Outer Harbour Waters for shipping activities directly related to port functions is essential to the ongoing trade facilitation role of Fremantle Ports.

The purpose of this policy is to ensure the safe and continuing use of the Outer Harbour Waters for port functions, that port functions are recognised as an important use of these waters, and that use by other vessels is also recognised. It is imperative that any decisions for the Outer Harbour Waters policy area support the long-term sustainability of the Port of Fremantle, and that uses that would create unacceptable impacts on shipping activities, or the maritime transport network, do not occur in this area.

## DESCRIPTION

This policy applies to the Outer Harbour Waters detailed below.



The Inner Harbour Waters are subject to a separate policy.

## **OBJECTIVES**

1. To clarify the purpose and function of the Outer Harbour Waters policy area and ensure it is communicated effectively.
2. To ensure that uses and development integrate with and make a positive contribution to the long-term sustainability of the Port of Fremantle and its role as a dynamic and efficient working port.
3. To specify uses that are considered appropriate for the Outer Harbour Waters policy area.
4. To describe critical issues pertaining to new or additional uses within the Outer Harbour Waters policy area.
5. To ensure that any use or development represents the optimal use of the subject area, and does not restrict other uses within the policy area.
6. To ensure that all uses are integrated with the maritime transport network, and contribute to long-term sustainable planning.
7. To outline administrative processes and how any variations will be dealt with.

## **POLICY STATEMENTS**

1. Uses within the Outer Harbour Waters policy area are to recognise and maintain port functions, as described in the *Port Authorities Act 1999*.
2. Uses within the Outer Harbour Waters policy area are to support the sustainability of Fremantle Ports, and the effectiveness and efficiency of port operations, and future trade or shipping growth.
3. Proposed activities or uses shall be excluded from the Outer Harbour Waters if they:
  - create impacts that are considered to unacceptably affect the safe and efficient movement of ships
  - generate volumes/types of marine traffic that cannot be catered for within the Outer Harbour Waters
  - do not meet security standards
  - do not demonstrate compliance with safety standards.
4. Good planning is essential to the future of the Port of Fremantle. New uses, or increases in scale of existing uses, are to demonstrate:
  - integration with the maritime transport network
  - an ability to integrate with marine traffic generated by other uses
  - compatibility with other existing or planned future uses
  - that there will be no interference with the safe navigation of ships

- that security will not be affected
  - they have required environmental approvals.
5. Significant port, industrial and related uses are located around and near the policy area. Opportunities to create synergies with these uses, for the purpose of facilitating trade will be encouraged.
  6. All uses/development must pay particular attention to complying with the intent and requirements of the *Port Authorities Act 1999*.
  7. Prior to considering new, renewed or amended lease arrangements, the compatibility of the lease with port functions is to be demonstrated.
  8. The waters of the Outer Harbour are used, and will continue to be used, for uses unrelated to the functions of the port, such as recreational boating and aquaculture. However, these uses should be consistent with this policy and not impact on port operations.

## **APPLICATION**

1. This policy is not retrospective.
2. The requirements of this policy may only be varied subject to the approval of the Fremantle Ports Board. In considering a variation, the proponent of the variation is to demonstrate:
  - grounds for variation
  - merits of the proposal
  - no negative impacts on port operations in the short and long term
  - why an alternative location, external to the port boundary is not being pursued
  - economic, social and environmental benefits of the proposal.
3. Extension, variations and renewals of leases will be considered in terms of their ability to achieve port, land use and transport planning objectives, and are subject to determination by the Fremantle Ports Board.



## FREMANTLE PORTS

1 Cliff Street  
Fremantle Western Australia 6160  
T: +61 8 9430 3555  
F: +61 8 9336 1391  
E: [mail@fremantleports.com.au](mailto:mail@fremantleports.com.au)  
[www.fremantleports.com.au](http://www.fremantleports.com.au)