

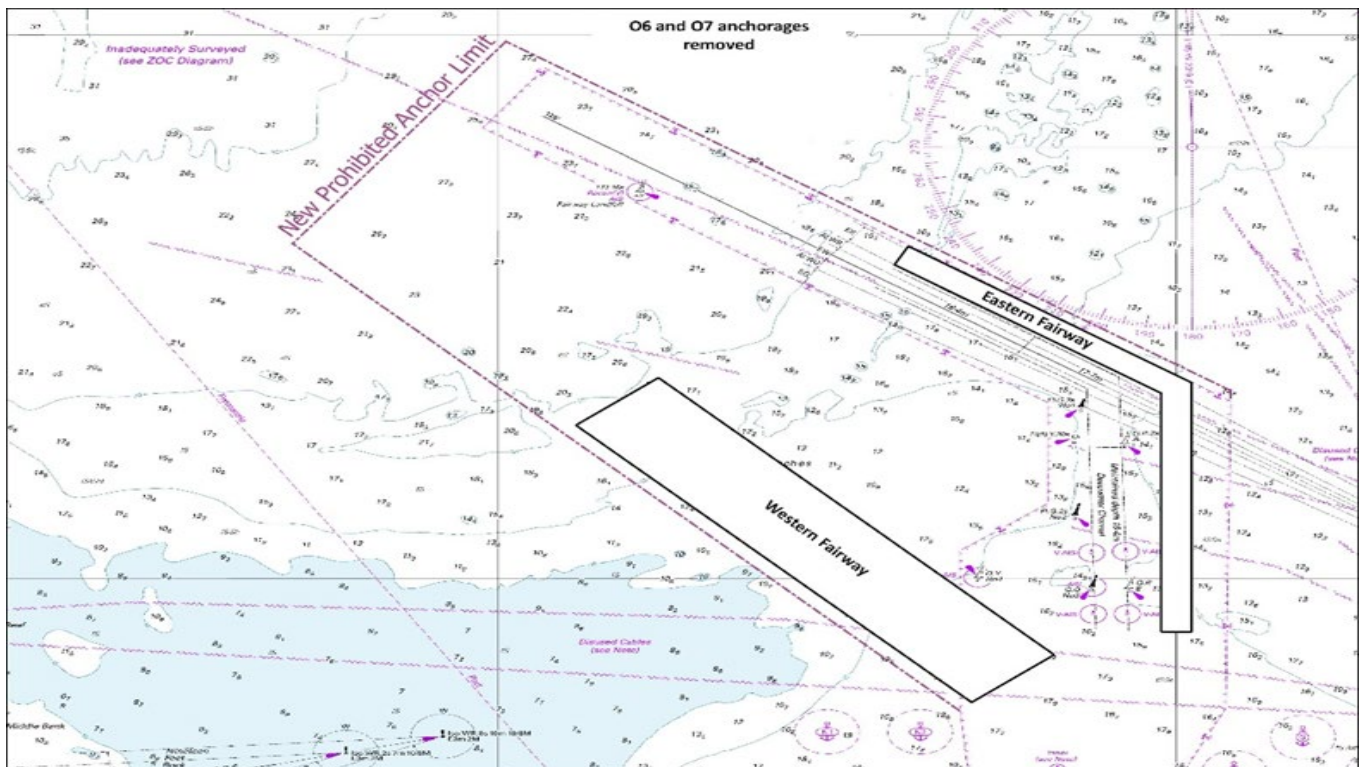
**DATE: 28 February 2024****SUBJECT: Amendments to approaches to the Port of Fremantle**

This Harbour Masters Instruction applies to all vessels arriving at the Port of Fremantle.

The following amendments to the approaches to Fremantle are formally declared by Fremantle Ports and will come into force following the Australian Hydrographic Office's nautical chart release on 01 March 2024.

The amendments will be in accordance with the accompanying chartlet below and include:

1. Removal of both O6 and O7 Anchorages;
2. East Channel is renamed Eastern Fairway and extended north of Deepwater Channel. Dog leg is removed from southern extent. Eastern Fairway will appear on ENC cell AU5FRE01 and AUS 112 paper chart as a 0.15nm (280m) wide polygon. Eastern Fairway is only for use by vessels <11.0m draft;
3. Western Approaches is renamed Western Fairway. Western Fairway will appear on ENC cell AU5FRE01 and AUS 112 paper chart as a 0.54nm (1000m) wide polygon. Western Fairway is only for use by vessels <9.0m draft;
4. Prohibited anchor limit repositioned to incorporate Deepwater Channel, Eastern and Western Fairway limits.



## HARBOUR MASTER'S INSTRUCTION

**01-2024**

These amendments will appear in latest version of Port Information Guide and include draft limits and recommended courses for new fairways.

Mariners are advised to navigate with caution.

**Charts permanently affected RAN: Aus 112; AUS 754; DoT: WA 001**

Any queries regarding the above process must be submitted to the email address:

[harbourmaster@fremantleports.com.au](mailto:harbourmaster@fremantleports.com.au)



---

**Capt. Savio Fernandes**

Harbour Master