

## Port of Fremantle Navigational Warning 11/2024

**Date of issue:** 23.04.2024

**Date of effect:** 23.04.2024

**Date of cancellation:** 02.05.2024

**Charts affected:** AUS 112

### Former notice 09/2024 cancelled - Inner Harbour Maintenance Dredging

Fremantle Ports will continue maintenance dredging of the Inner Harbour to remove sediments that have accumulated since capital dredging in 2010. A total dredge volume of 60,000m<sup>3</sup> will be removed and disposed of north of Gage Roads N6 Anchorage.

The trailer suction hopper dredge *TRUD R* and attending hydrographic survey vessel *RIND R* will be operating 24 hours until May 1<sup>st</sup>, 2024. The dredge will be equipped with requisite navigation lights and localised spotlights for periods of darkness.

The dredge will **only** operate within the 14.7m dredge limit as shown on Aus Chart 112. Actual time spent in each area will be dependent upon commercial shipping which will not be adversely affected by dredging operations.

Mariners are advised to navigate with caution in the vicinity of these vessels and the target disposal area. *TRUD R* and *RIND R* will monitor and be contactable on Marine VHF 12 if required.

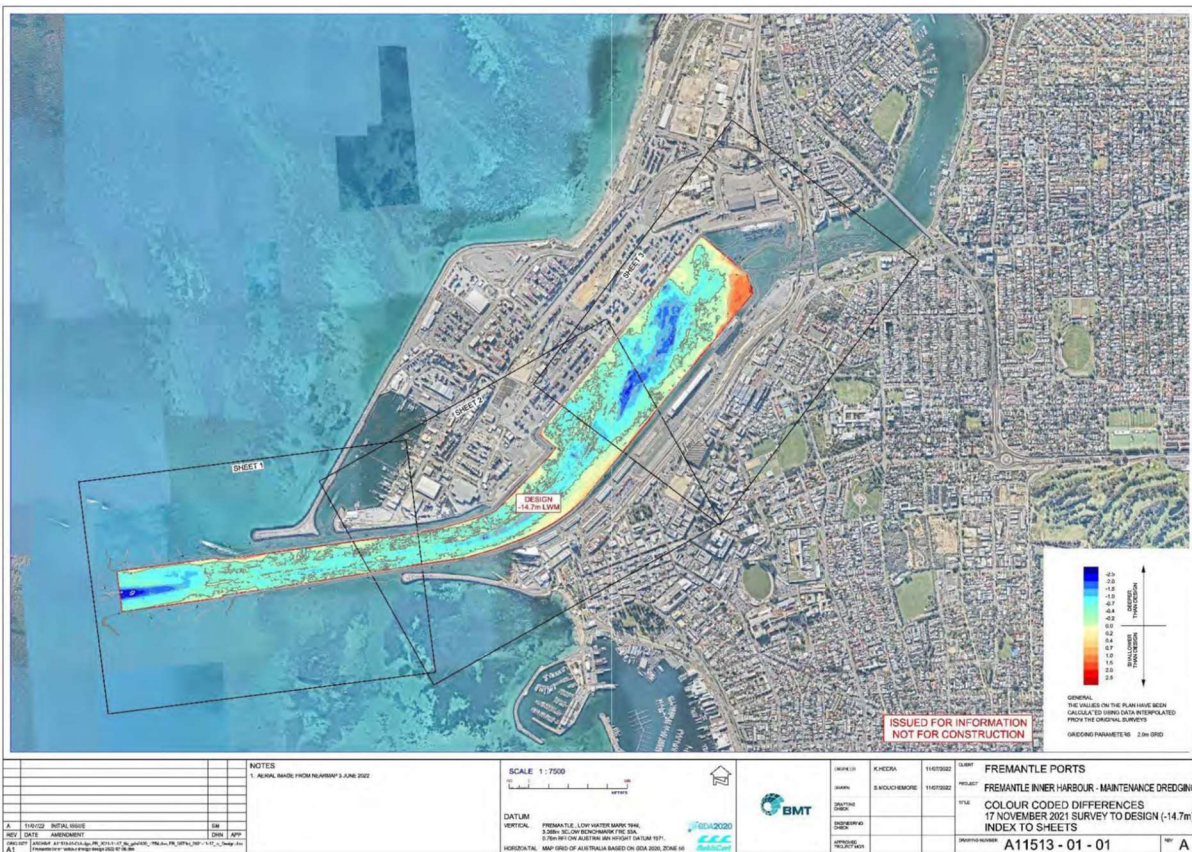
### **Harbour Master's Office Fremantle Ports**



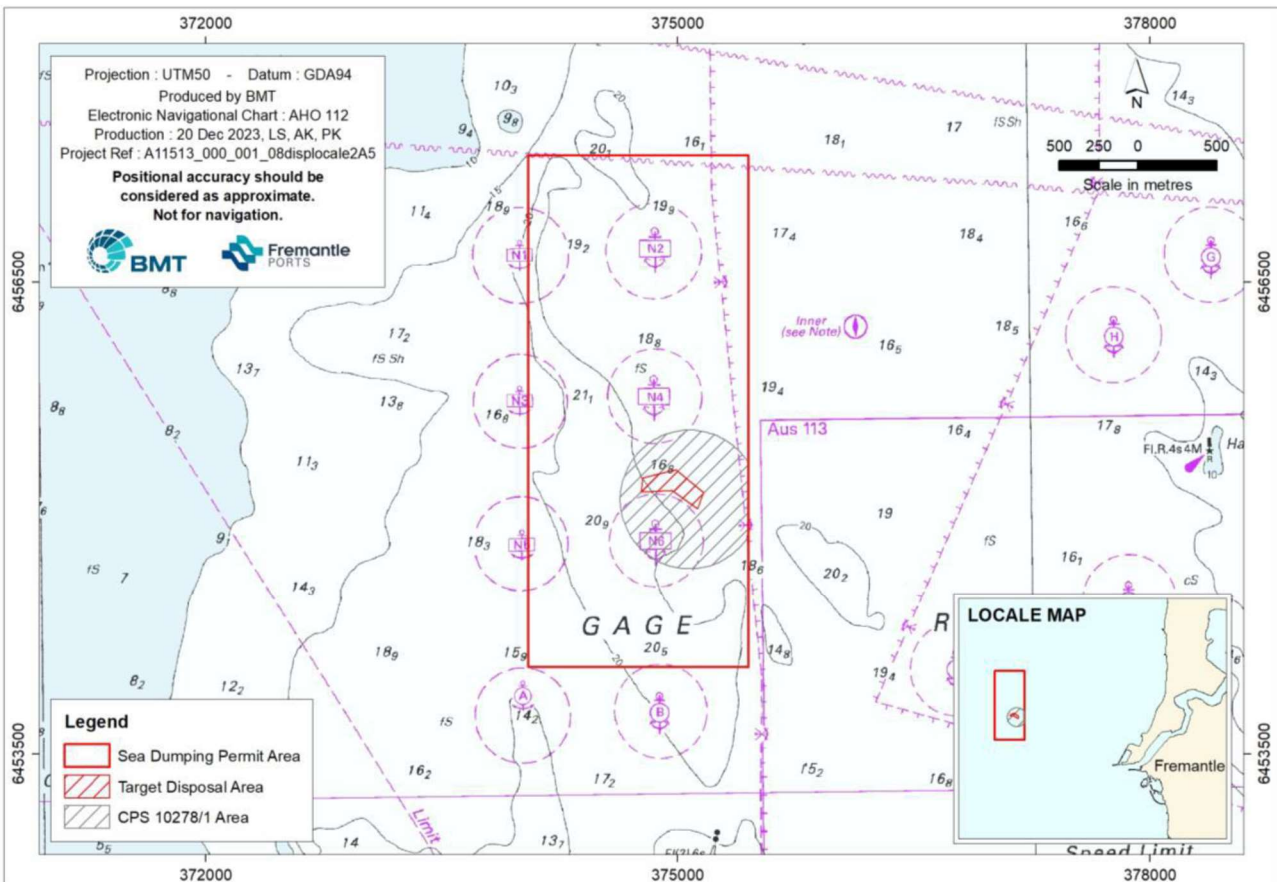
*Dredge - TRUD R*



*Hydrographic survey - RIND R*



Inner Harbour Maintenance Dredging - 14.7m dredge area



Inner Harbour Maintenance Dredging - Target Disposal Area