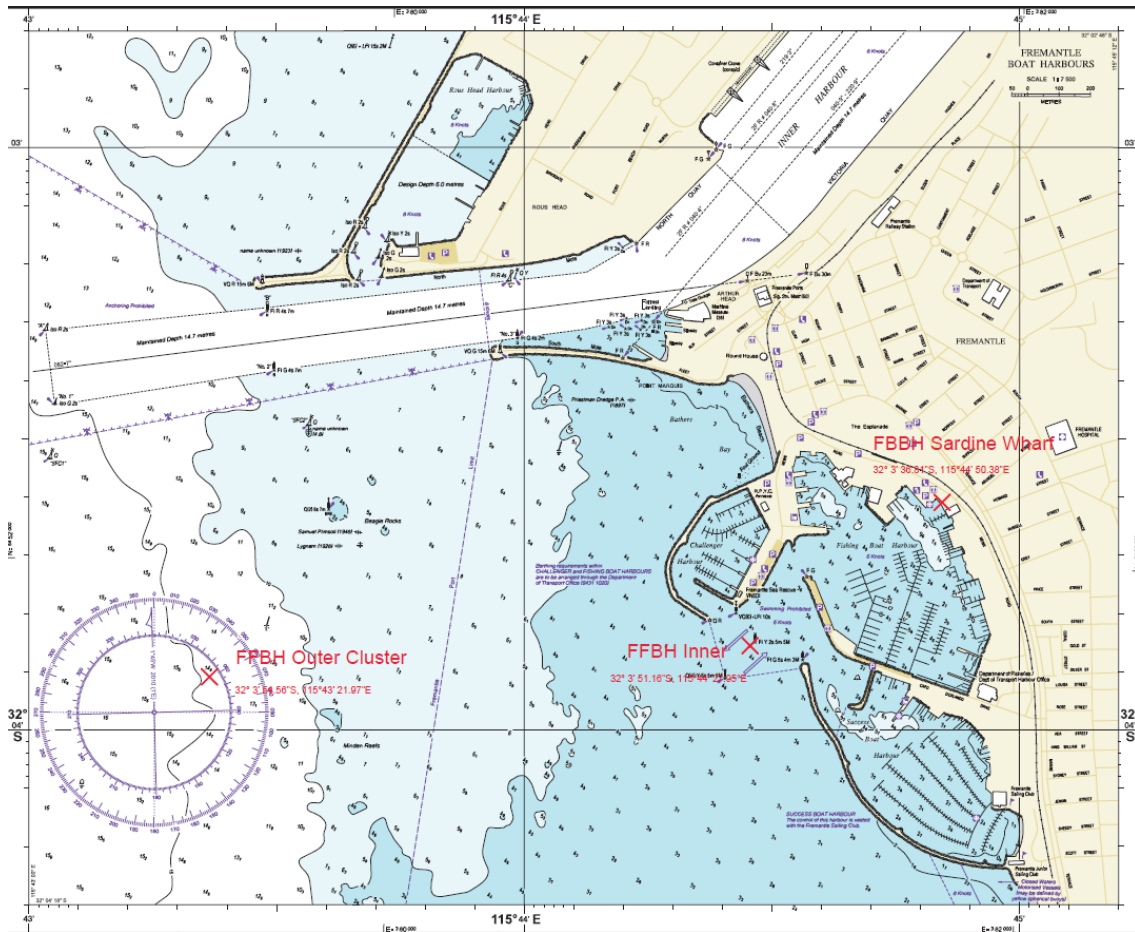


Port of Fremantle Navigational Warning

NAV-WARN #: **05/2024**
Date of issue: 22.02.2024
Date of effect: 22.02.2024
Effective until: 31.02.2025
Charts affected: AUS 117

Fremantle Fishing Boat Harbour Entrance

An Acoustic Wave and Current (AWaC) measuring device will be installed in the approaches to Fremantle Fishing Boat Harbour. This device will be capturing data and is envisioned to be deployed for a minimum period of 12 months from the end of February 2024.



**Harbour Master's Office
 Fremantle Ports**

Location Name	Instrument Type	Depth (mAHD)	Depth (mCD)	Latitude (S) GDA '94
FBBH Inner	Nortek AWAC + RBR Solo	5.1	4.3	32° 3' 51.16"
FBBH Outer Cluster	-Nortek AWAC + RBR Solo -Nortek Signature 1000 -Nortek signature 1000	14.4	13.6	32° 3' 54.56"
FBBH Sardine Wharf	RBR Solo	3.0	2.2	32° 3' 36.81"



A typical AWAC. (1.0m x1.0m x0.5m high) frame secured to the seabed with star pickets and two anchors

Mariners are advised to navigate with caution when transiting the above area.

**Harbour Master's Office
Fremantle Ports**