



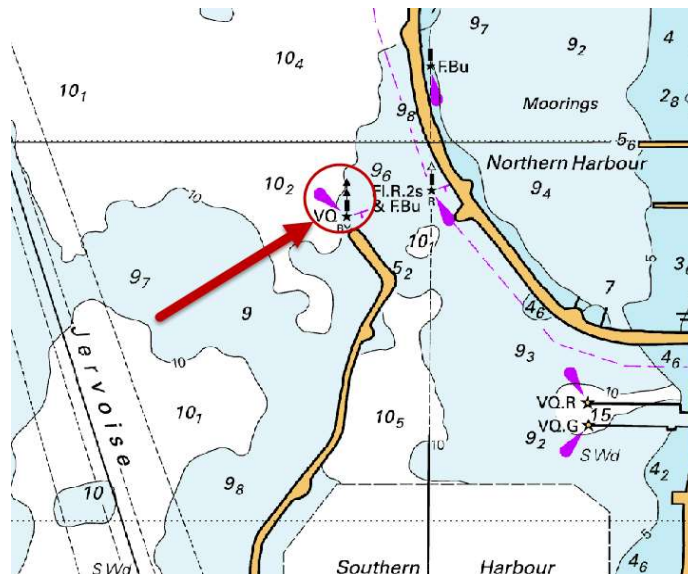
## Port Operations

TO: Navigation Warning distribution list  
FROM: **HARBOUR MASTERS OFFICE**  
DATE: 18<sup>th</sup> November 2020 1300 hrs

### **NAVIGATION WARNING** **\*\* Updated 18<sup>th</sup> November 2020\*\***

For: Port Of Fremantle  
Reference Charts Aus 117  
Position 32° 09.06' South 115° 45.61' East

Be advised that the light on the Cardinal Mark at the northern entry to AMC is fixed (not flashing).



**Navigate with caution.**

Harbour Masters office  
Fremantle Ports