



## Papers - August 2018

### WA Port Operations Taskforce

---

1. Meeting Overview - August 2018
2. Agenda
3. WA Port Operations Task Force: Report from Fremantle Ports

## Meeting Overview - August 2018

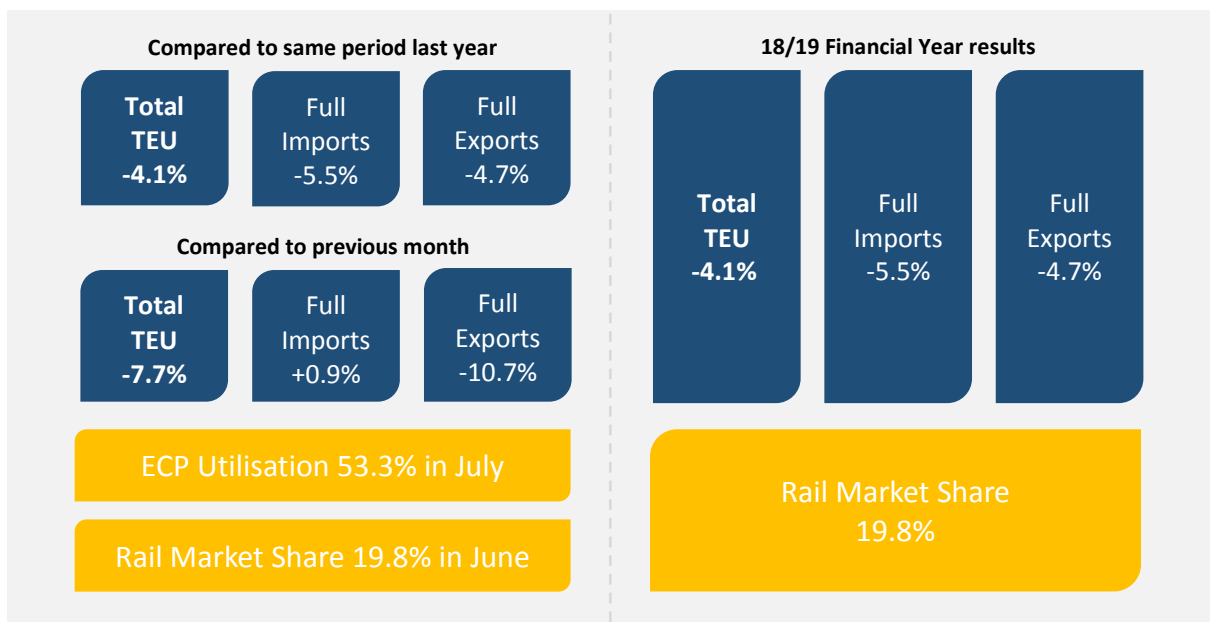
### Key points of discussion

- Michael Pal presented an overview of the ASEAN Port and Shipping Conference recently held in Johor Bahru, including vessel size trends, traffic management initiatives and long-term planning processes and considerations
- Fremantle Ports sought feedback from members on topics for future presentations at Taskforce meetings. Suggestions included future road infrastructure, digitalisation and technology, market developments, and changes to laws and regulations impacting on the industry.
- Highest ever volumes for the Forrestfield rail service recorded in July, with 19.8% market share recorded overall
- “Is Fremantle’s Future a Port City” Forum to be held in late August
- ABF willing to hold discussions with forwarders/brokers on the best way to communicate the changing nature of LCL cargo, as reported at the last meeting
- Preparation for Stink Bug season underway by the Department of Agriculture and Water Resources, with offshore fumigation being looked at and additional countries being added to the “at risk” list
- Sparrow sightings should be reported directly to local DAWR rather than through the online portal
- FLC working with a communications firm on what can be done to proactively communicate the benefits of freight to the community, with feedback from the Taskforce welcome.
- Main Roads reported that planning for the High Street upgrades is continuing until late 2018, with EOIs to be released in the last quarter of 2018 and awarded in March 2019. Construction expected to be completed in late 2020, with a construction reference group to be established.

### Actions

- **Taskforce** to follow up with Main Roads on the consultation process for the High Street upgrade

### Trade and statistics - July (preliminary only)





## Agenda

**WA Port Operations Taskforce**  
August 2018

Thursday, 2 August 2018  
8:00am-10:00am  
Fremantle Ports

- 
- Chairperson** • Kellie Houlahan  
**Executive Officer** • Sophie Gillespie
- Next Meeting** • Thursday, 6 September 2018
- 

### Agenda

8:00am	Welcome, opening comments and apologies	Kellie Houlahan
8:05am	Confirmation of last month's minutes	Kellie Houlahan
8:10am	Overview of ASEAN Ports and Shipping Conference	Michael Pal
8:25am	Feedback from members on future presentations	Dom Thatcher
8:40am	Trade statistics overview	Sophie Gillespie
8:45am	Round table	All
	<ul style="list-style-type: none"><li>• Container terminals</li><li>• Empty container parks</li><li>• Rail</li><li>• Shipping Australia</li><li>• Western Road Federation</li><li>• Transport operators</li><li>• Unions (MUA and TWU)</li><li>• Customs brokers/freight forwarders</li><li>• CBFCA</li><li>• Australian Border Force</li><li>• Department of Agriculture &amp; Water Resources</li><li>• Main Roads WA</li><li>• Freight &amp; Logistics Council</li><li>• Fremantle Ports</li></ul>	
9:55am	General business and meeting close out	All

**Attendees:** ACFS Port Logistics, Australian Border Force, CC Containers, Department of Agriculture and Water Resources, Fremantle Ports, ICL, Intermodal Group, JD Container Logistics, Lou Valsecchi & Associates, Maritime Union of Australia, ORPS, Patrick Terminals, Qube Logistics, WA Transport Workers Union, EES Shipping, Freight and Logistics Council WA

**Apologies:** Graeme Wilson, Visa Global, Toll Global Express, AWH, CBFA, Superscoop Transport, Main Roads WA, Mediterranean Shipping Company, Department of Transport, Curtin University, Stevenson Logistics, DP World

# WA Port Operations Task Force: Report from Fremantle Ports

Meeting Date: 2 August 2018

## 1. Trade Statistics

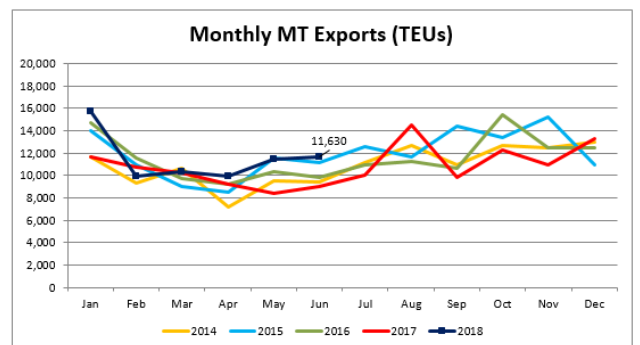
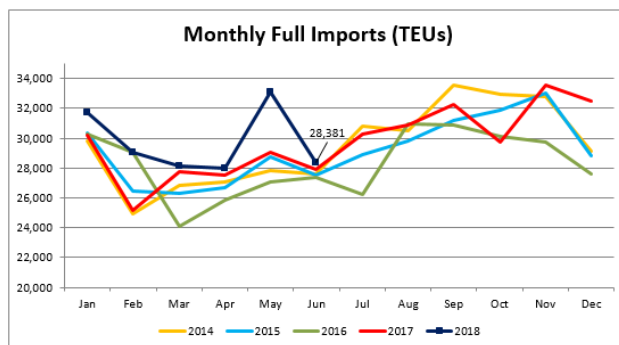
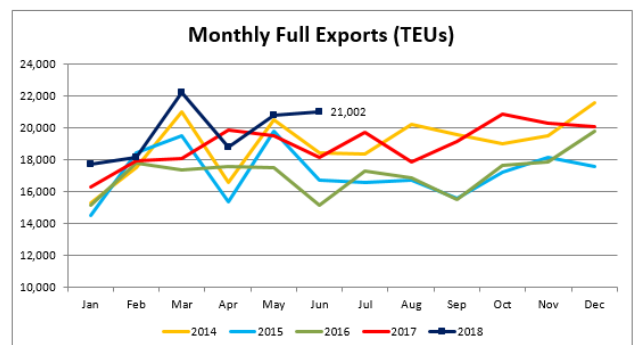
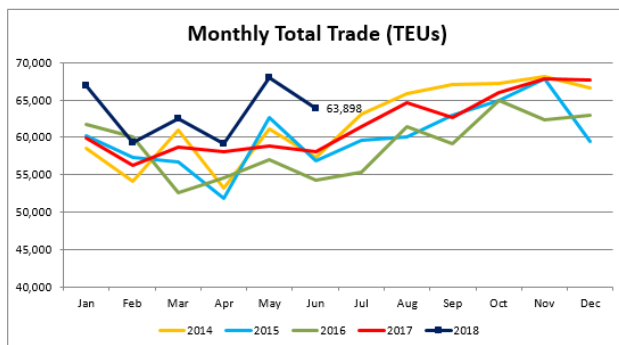
### Monthly Results

Total trade was up 9.9% in June compared to the same period last year. Loaded imports were up 1.7% and loaded exports were up 15.6%.

There were 42 container visits in June.

July statistics are not yet available.

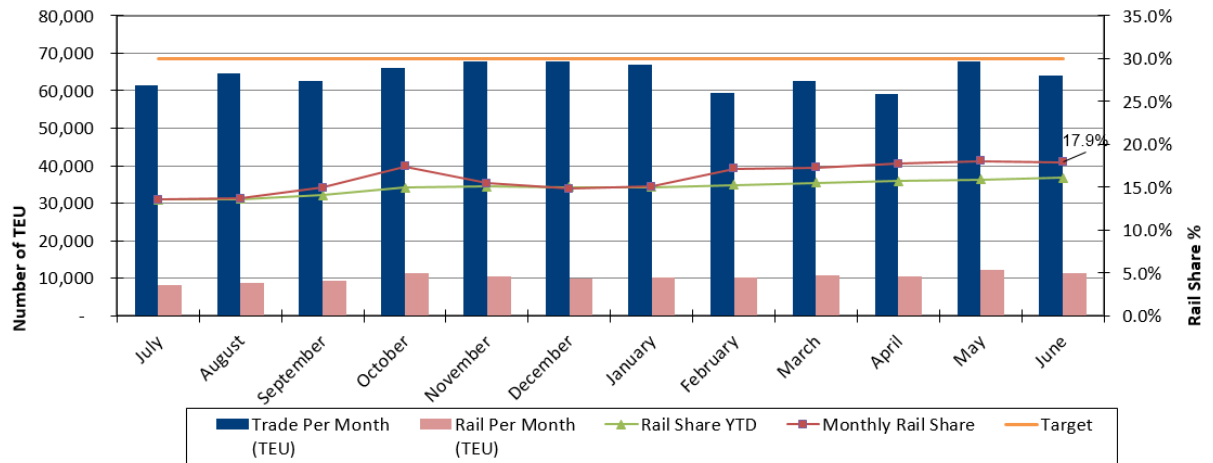
Jun-18	TEU	Variance to 2017	YTD Variance to FY16/17	Variance to previous month	Containers	Variance to 2017	YTD Variance to FY16/17
Total	63,819	9.9%	7.5%	-6.1%	43,070	8.5%	7.2%
Loaded Imports	28,383	1.7%	7.1%	-14.2%	19,003	0.5%	7.2%
Empty Imports	2,884	-1.2%	0.8%	10.4%	2,255	-2.9%	-0.4%
Loaded Exports	21,002	15.6%	10.1%	1.0%	14,981	16.2%	8.8%
Empty Exports	11,550	27.5%	5.6%	1.0%	6,831	22.4%	6.4%



## 2. Rail Services

Rail recorded high volumes again in July, with 10,000 TEUs being exceeded for the 10<sup>th</sup> consecutive month. As July trade statistics are not yet available, market share cannot yet be provided.

### Monthly Rail Share FY 2017/2018



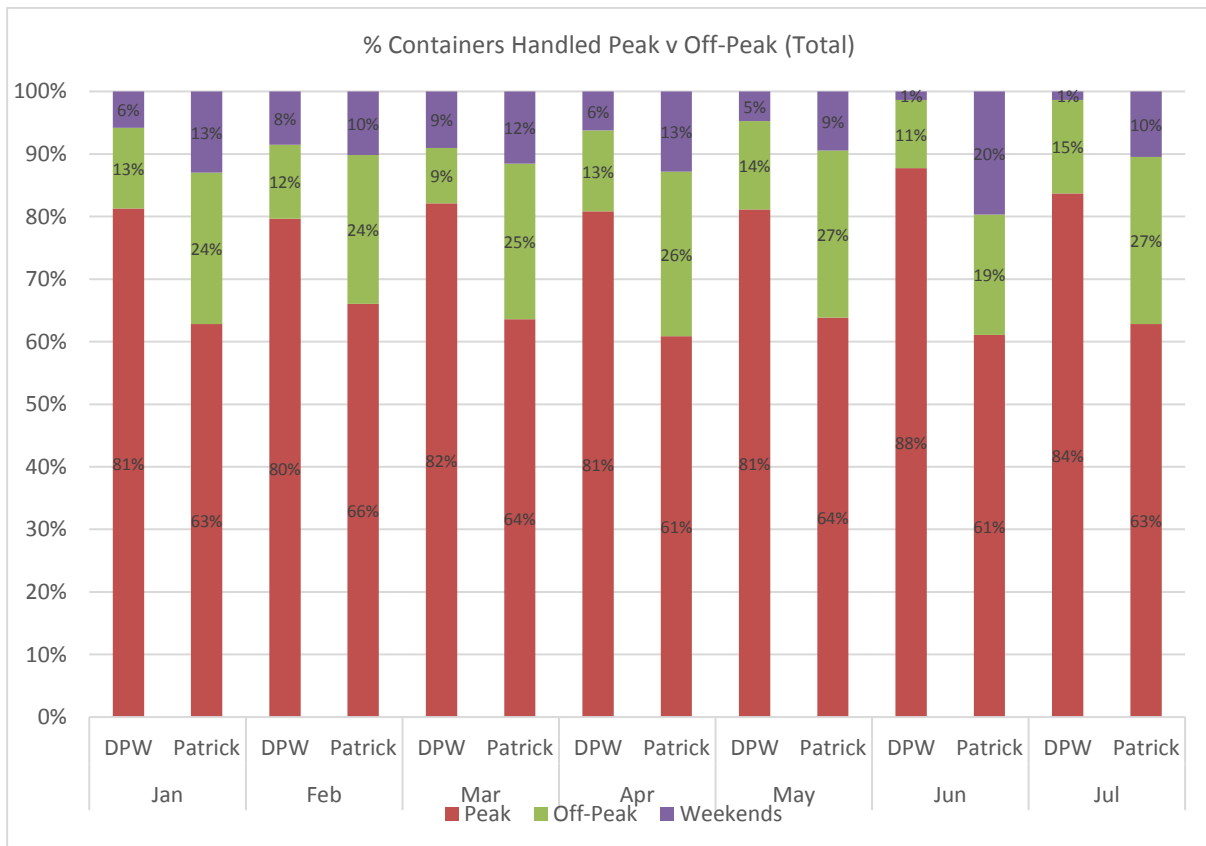
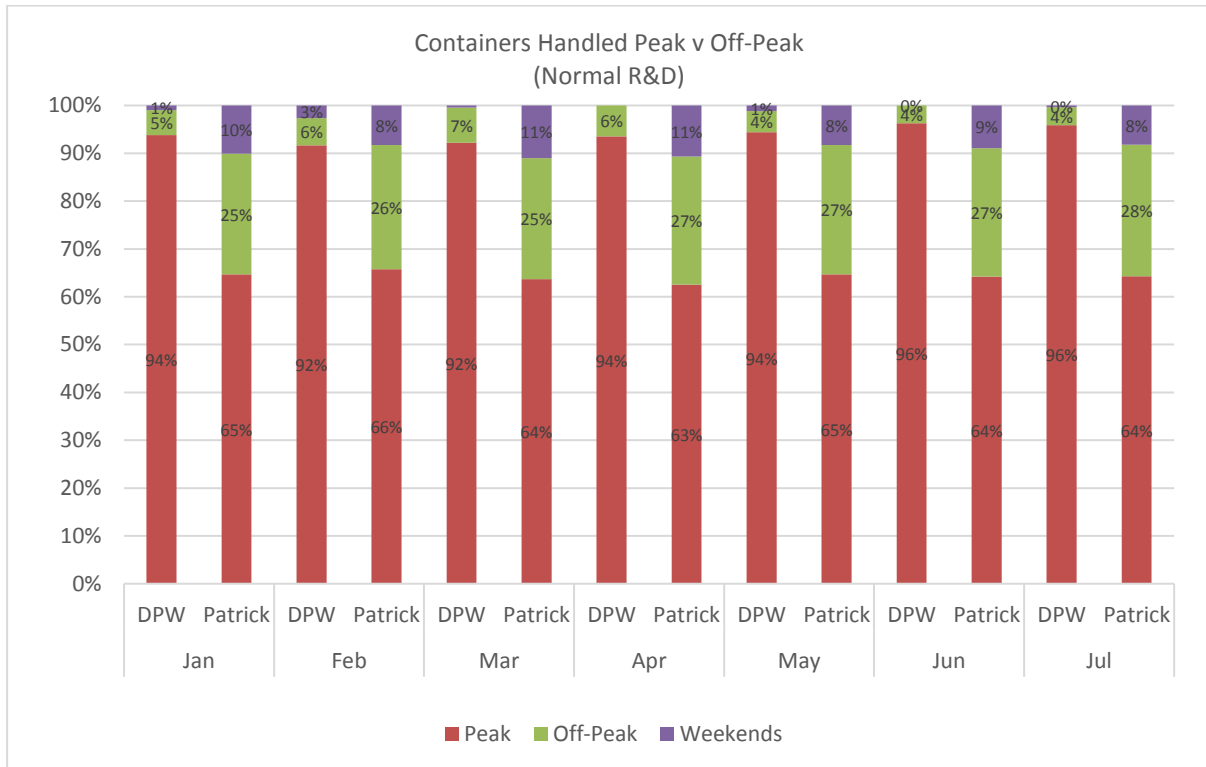
### 3. Empty Container Parks: ECP stocks and capacity utilisation

Container Parks' stocks, as recorded on the 15<sup>th</sup> of each month, are shown in the table below. Overall stocks in July were at 53.3%, down slightly from 56.7% in June.

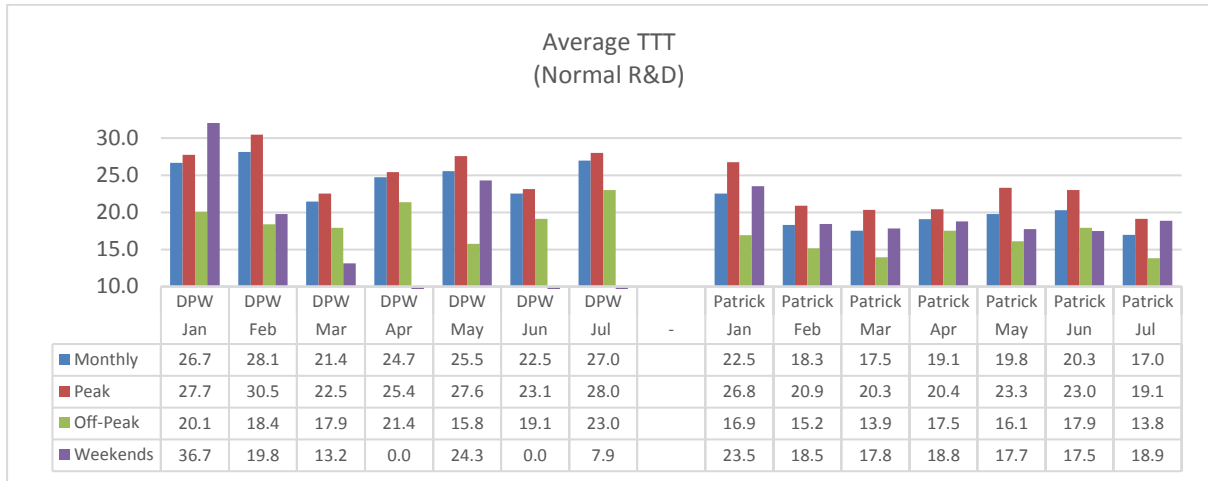
Jul 2018	Current Month						
	Capacity (TEU)	Holding 20'	Holding 40'	Holding TEUs	% Utilisation	Share of Total Capacity	Share of Total Holdings
QUBE Container Park	7,500	1,852	1,794	5,440	72.5%	30.1%	41.0%
QUBE Central	5,850	937	1,033	3,003	51.3%	23.5%	22.6%
Tyne-ACFS	6,147	524	471	1,466	23.8%	24.7%	11.1%
ICL 1	1,100	171	198	567	51.5%	4.4%	4.3%
ICS (Forrestfield)	2,600	588	676	1,940	74.6%	10.4%	14.6%
Patrick Cargolink	1,700	21	414	849	49.9%	6.8%	6.4%
<b>Total Container Parks</b>	<b>4,897</b>	<b>4,093</b>	<b>4,586</b>	<b>13,265</b>	<b>53.3%</b>		

## 4. 1-Stop Container Terminal Statistics

### i. Containers handled peak v off-peak



ii. Truck turn time (TTT) - R&D only



iii. Container turn time (CTT) - R&D only

