



Papers - October 2018

WA Port Operations Taskforce

1. Meeting Overview - October 2018
2. Agenda
3. WA Port Operations Taskforce: Report from Fremantle Ports

Meeting Overview - October 2018

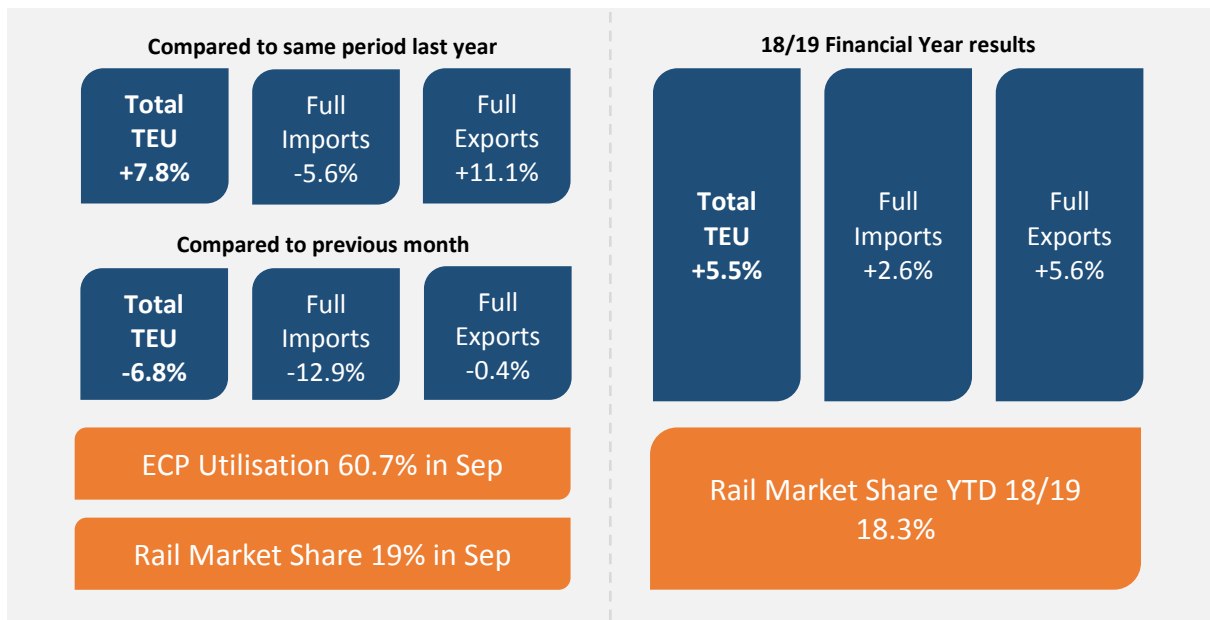
Key points of discussion

- Fremantle Ports provided an overview of the recent improvements to traffic management in the port precinct which have been implemented (by FPs Traffic Management Co-Ordinator in conjunction with tenants and others) including:
 - Parking issues on traffic islands, particularly at the S-Bend, resolved, eliminating potential safety issues
 - Material handling equipment permit system allowing legal transfer within the port precinct implemented
 - Reduction in roll overs - company GPS systems with alerts may have contributed to no rollovers occurring this year
 - Improvement in twist locks being secured appropriately.
- An overview of the Container Movement Study final report was provided by Fremantle Ports with a public brochure to be published in the coming weeks. Major findings included:
 - Major changes in some import and export origin and destination areas
 - Increase in staging
 - Increase in weight of containers, which may be partly due to more accurate reporting of weights
 - Significant drop in AAP activity.
- Rail handled record volumes in September.
- Feedback provided to DAWR on stinkbug season, with CBFCA members reporting a number of issues. DAWR encourage members to provide feedback directly them.
- Members reported difficulties in finding drivers, which was a major topic at the recent Western Roads Federation conference. Some of the issues members noted was the upturn in mining, an aging workforce and the time taken to get an appropriate licence.

Actions

- **Fremantle Ports** to follow up potential changes to some signage in North Quay

Trade and statistics - September (preliminary only)





WA Port Operations Taskforce October 2018

Thursday, 4 October 2018
8:00am-10:00am
Fremantle Ports

-
- Chairperson** • John Park
Executive Officer • Sophie Gillespie
Next Meeting • Thursday, 1 November 2018
-

Agenda

8:00am	Welcome, opening comments and apologies	John Park
8:05am	Confirmation of last month's minutes	John Park
8:10am	Container Movement Study Findings	Michael Pal
9:00am	Trade statistics overview	Sophie Gillespie
9:05am	Round table	All
	<ul style="list-style-type: none">• Container terminals• Empty container parks• Rail• Shipping Australia• Western Road Federation• Transport operators• Unions (MUA and TWU)• Customs brokers/freight forwarders• CBFCA• Australian Border Force• Department of Agriculture & Water Resources• Main Roads WA• Freight & Logistics Council• Fremantle Ports	
9:55am	General business and meeting close out	All

Attendees: Australian Border Force, Fremantle Ports, Maritime Union of Australia, Qube Logistics, WA Transport Workers Union, Department of Transport, Department of Agriculture and Water Resources, Freight and Logistics Council WA, CBFA, Patrick Cargolink, Linx

Apologies: AWH, Toll Global Express, ACFS Port Logistics, Stevenson Logistics, Mediterranean Shipping Company, Superscoop Transport, Graeme Wilson, JD Container Logistics, Lou Valsecchi & Associates, CC Containers, Curtin University, ICL, Intermodal Group, EES Shipping Visa Global, Main Roads WA, DP World, ORPS, Patrick Terminals

WA Port Operations Taskforce: Report from Fremantle Ports

Meeting Date: 4 October 2018

1. Trade Statistics

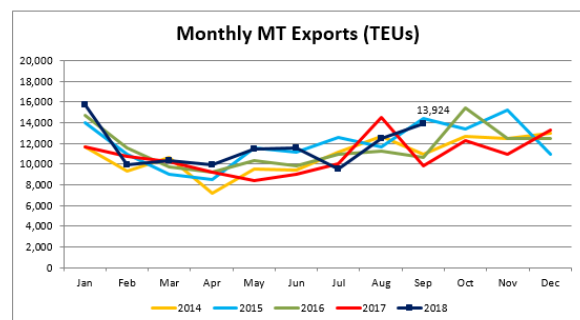
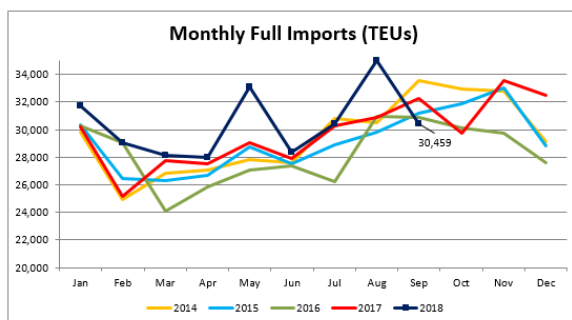
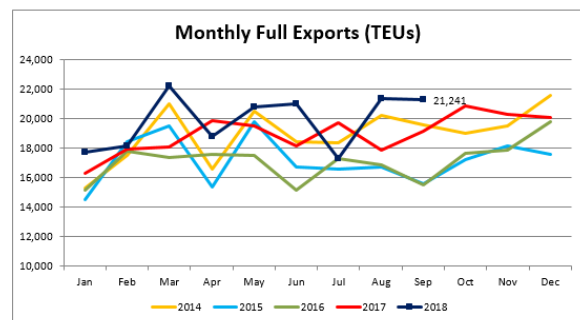
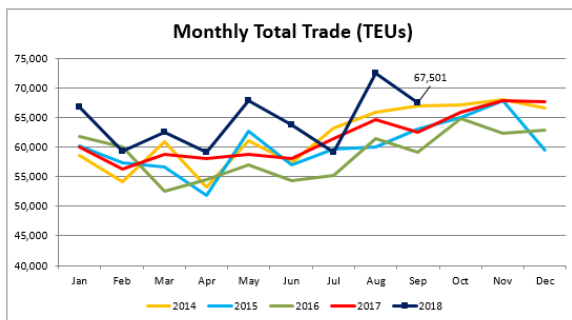
Monthly Results

Total trade was up 12% in August compared to the same period last year. Loaded imports were up 13.3% and loaded exports up 19.3%.

According to estimates, total trade in September was up 7.8%. Loaded imports were down 5.6% and loaded exports up 11.1%.

There were 43 container visits in August and 37 in September.

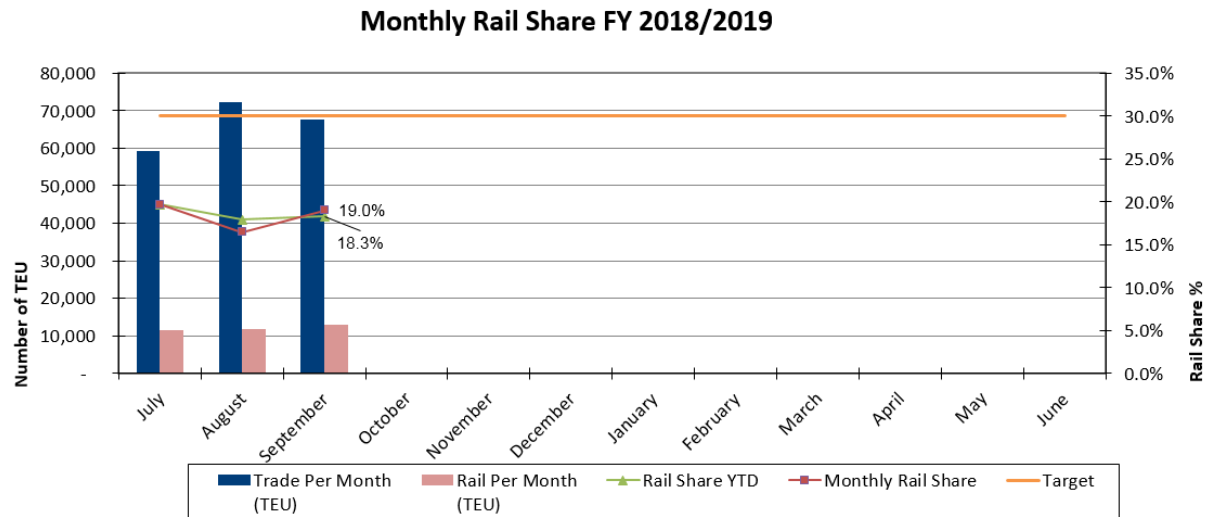
Aug-18	TEU	Variance to 2017	YTD Variance to FY16/17	Variance to previous month	Containers	Variance to 2017	YTD Variance to FY16/17
Total	72,412	12.0%	4.3%	22.4%	48,341	12.6%	5.1%
Loaded Imports	34,988	13.3%	6.9%	15.0%	22,986	10.8%	4.9%
Empty Imports	3,609	153.4%	98.9%	87.6%	3,091	205.1%	143.4%
Loaded Exports	21,327	19.3%	2.8%	23.5%	15,359	20.0%	5.0%
Empty Exports	12,488	-13.8%	-10.4%	31.1%	6,905	-17.7%	-12.5%
Sep-18	TEU	Variance to 2017	YTD Variance to FY16/17	Variance to previous month	Containers	Variance to 2017	YTD Variance to FY16/17
Total	67,501	7.8%	5.5%	-6.8%	44,729	6.5%	5.5%
Loaded Imports	30,459	-5.6%	2.6%	-12.9%	20,126	-6.6%	1.0%
Empty Imports	1,877	33.6%	77.0%	-48.0%	1,345	46.7%	111.7%
Loaded Exports	21,241	11.1%	5.6%	-0.4%	15,652	14.5%	8.2%
Empty Exports	13,924	42.0%	4.6%	11.5%	7,606	29.9%	-0.3%





2. Rail Services

Rail continued its strong growth again in September, with record TEUs being handled (almost 13,000 TEU). The service accounted for a record 19% of total TEU in September, up from 17% in August.



3. Empty Container Parks: ECP stocks and capacity utilisation

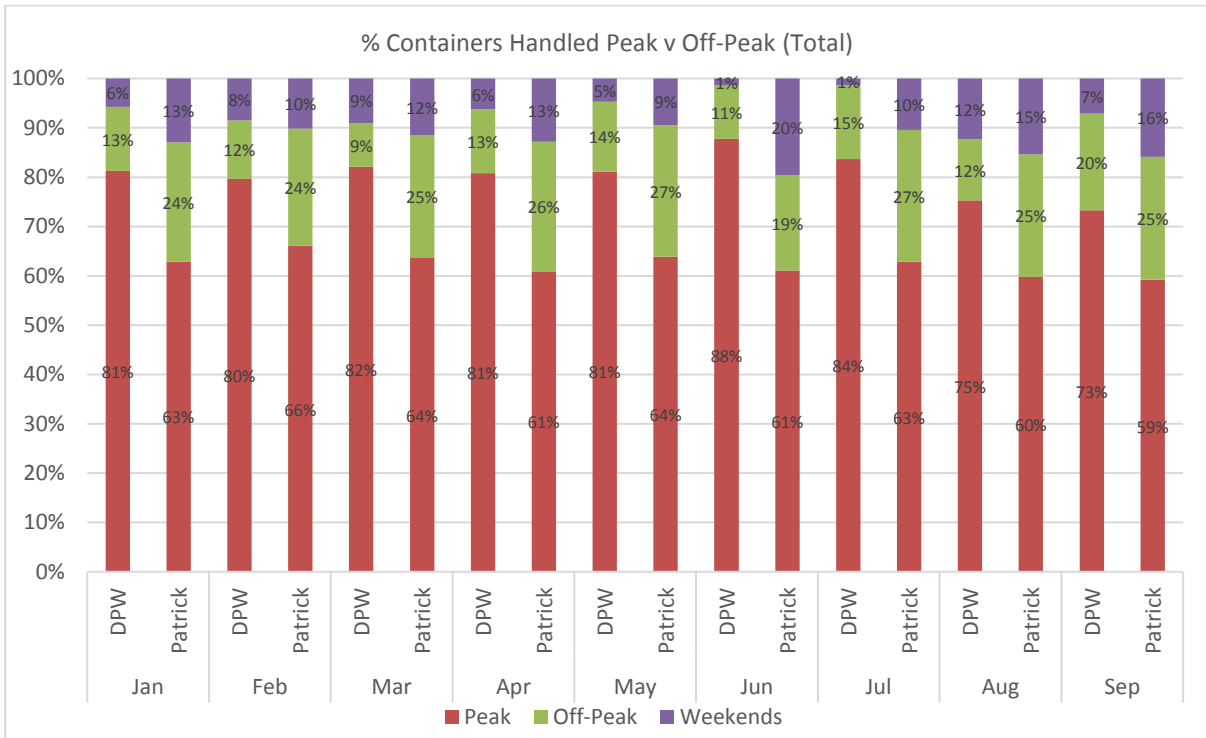
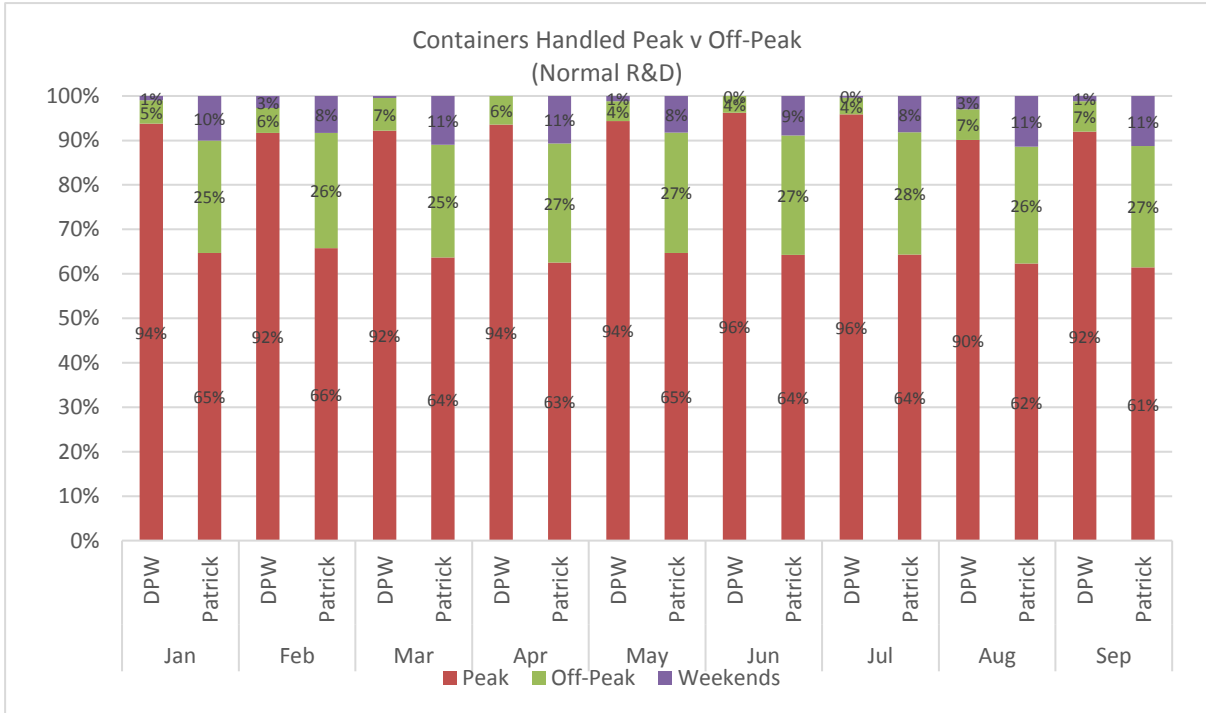
Container Parks' stocks, as recorded on the 15th of each month, are shown in the table below. Overall stocks in September were at 60.7%, up slightly from 57.1% in August.

August 2018	Current Month						
	Capacity (TEU)	Holding 20'	Holding 40'	Holding TEUs	% Utilisation	Share of Total Capacity	Share of Total Holdings
QUBE Container Park	7,500	1,822	1,816	5,454	72.7%	30.1%	36.1%
QUBE Central Tyne-ACFS	5,850	1,418	924	3,266	55.8%	23.5%	21.6%
ICL 1	6,147	488	922	2,332	37.9%	24.7%	15.4%
ICS (Forrestfield)	1,100	338	96	530	48.2%	4.4%	3.5%
Patrick Cargolink	2,600	872	765	2,402	92.4%	10.4%	15.9%
Patrick Cargolink	1,700	107	507	1,121	65.9%	6.8%	7.4%
Total Container Parks	24,897	5,045	5,030	15,105	60.7%		



4. 1-Stop Container Terminal Statistics

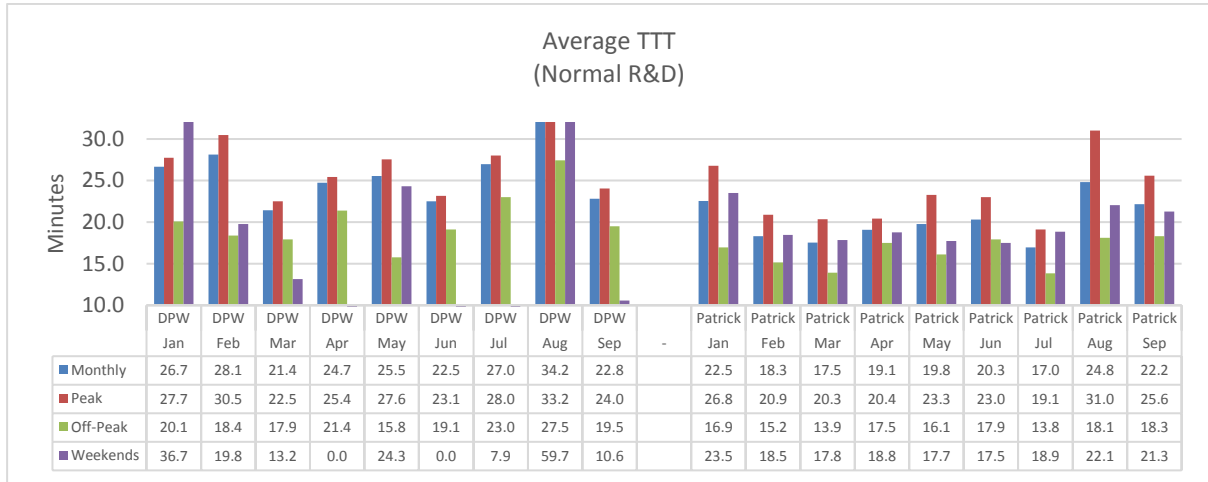
i. Containers handled peak v off-peak





WESTERN AUSTRALIAN
PORT OPERATIONS
TASKFORCE

ii. Truck turn time (TTT) - R&D only



iii. Container turn time (CTT) - R&D only

