



**THIS NOTICE IS FOR THE INFORMATION OF SHIP'S
MASTERS AND OTHERS CONCERNED**

**FREMANTLE PORTS NOTICE TO MARINERS
14/2011**

**FREMANTLE PORT
INNER HARBOUR – Updated Coordinates and New Leads**

Former Notice - FPA NTM 13/2011 Cancelled

Date - On or after 4th July, 2011

A number of front and rear transit leads have been established, repositioned or confirmed in and around the Inner Harbour as follows:

Common Name (existing Vol K reference indicated if applicable)	Light Char	South (WGS84*)	East (WGS84*)
Inner Harbour Entrance Front Lead (Vol K: 1767.6)	F Bu	32° 3.22728'	115° 44.45048'
Inner Harbour Entrance Rear Lead (Vol K: 1767.61)	F Bu	32° 3.21439'	115° 44.56886'
Canberra Rear Lead (Vol K: 1767.115)	F R	32° 3.36172'	115° 44.19887'
Wongara Shoal West Front Lead (Vol K: 1768.6)**	F R	32° 2.54581'	115° 45.15753'
Wongara Shoal West Rear Lead (Vol K: 1768.61)**	F R	32° 2.56620'	115° 45.19411'
Victoria Quay (SCP) Starboard Lateral Mark	F G	32° 2.52103'	115° 45.16930'
North Quay East (Old 12 Shed) Front Lead**	F R	32° 2.31262'	115° 45.16577'
North Quay East (Berth #12) Front Lead (NEW)	F G	32° 2.38807'	115° 45.18820'
North Quay East (Berth #12) Rear Lead (NEW)	F G	32° 2.36771'	115° 45.20887'
North Quay West (Berth #2) Front Lead (NEW)	F G	32° 3.00367'	115° 44.38744'
North Quay West (Berth #2) Rear Lead (NEW)	F G	32° 3.01975'	115° 44.37197'
North Quay (Berth #1) Port Lateral Mark	F R	32° 3.16280'	115° 44.22448'

* Positions collected June 29th 2011 using RTK GPS

** Indicates replaced or repositioned

Mariners are advised to navigate with caution.

Charts Affected

RAN: Aus 112, Aus 113

DoT: WA 001

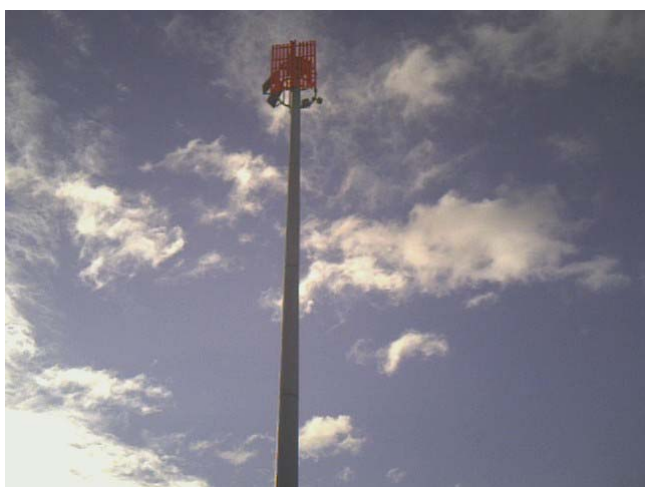
Capt A J M Gray
Harbour Master
Fremantle Ports
5th July, 2011



Inner Harbour Entrance Front



Wongara Shoal West Front



Inner Harbour Entrance Rear



Wongara Shoal West Rear



Canberra Rear



Victoria Quay (SCP) Starboard Lateral Mark



North Quay East (Old 12 Shed) 35m Pole Front



North Quay West (Berth #2) Front



North Quay East (Berth #12) Front



North Quay West (Berth #2) Rear



North Quay East (Berth #12) Rear



North Quay (Berth #1) Port Lateral Mark