



**THIS NOTICE IS FOR THE INFORMATION OF SHIP'S
MASTERS AND OTHERS CONCERNED**

**FREMANTLE PORTS NOTICE TO MARINERS
1/2014**

**FREMANTLE PORT
INNER HARBOUR – Updated Coordinates and New Leads**

Date - On or after 1st May, 2014

Front and rear transit leads have been established, positioned and confirmed in the Inner Harbour as follows:

Common Name	Light Char	South (WGS84*)	East (WGS84*)
Victoria Quay J Berth Front Lead (NEW)	F R	32° 2.61755'	115° 45.09062'
Victoria Quay J Berth Rear Lead (NEW)	F R	32° 2.64349'	115° 45.12803'

* Positions collected May 16th 2014 using RTK GPS

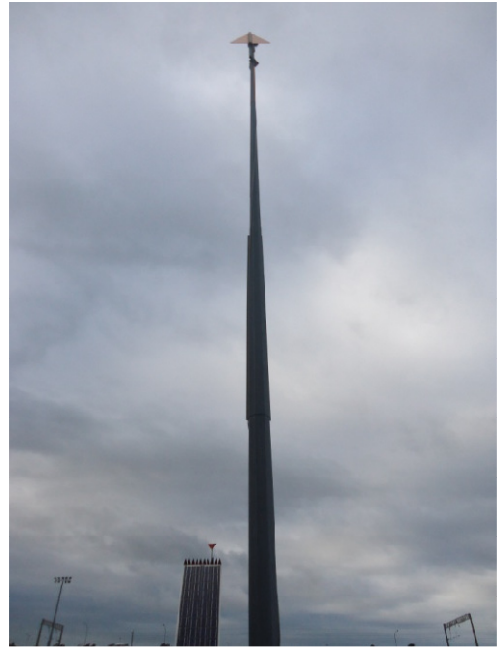
Mariners are advised to navigate with caution.

Charts Affected
RAN: Aus 113
DoT: WA 001

Capt A J M Gray
Harbour Master
Fremantle Ports
27th May, 2014



J Berth Rear



J Berth Front