



# THIS NOTICE IS FOR THE INFORMATION OF SHIP'S MASTERS AND OTHERS CONCERNED

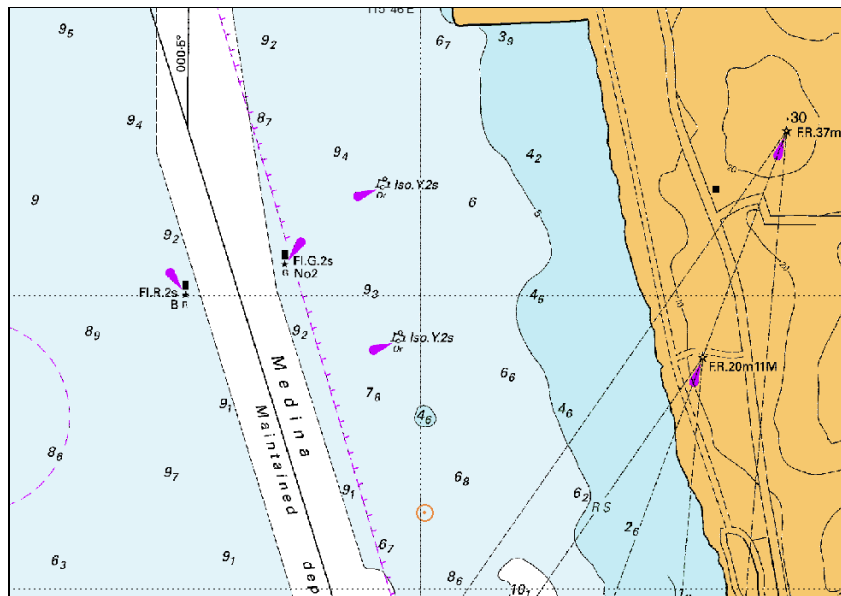
## FREMANTLE PORTS NOTICE TO MARINERS 01/2016

### FREMANTLE PORT Outer Harbour – AMC Medina Channel Mooring Buoys

*Former Notice* – FPA NTM 5/2011 is withdrawn.

Three mooring buoys approximately 0.5nm south of the Australian Marine Complex to the east of Medina Channel have been permanently removed. Coordinates of the removed buoys were as follows:

Name	Position WGS84
OMSA North	32°10.210' S 115°45.940' E (charted)
OMSA South	32°10.375' S 115°45.964' E (charted)
PB Mooring	32°10.580' S 115°46.006' E (not charted)



Mariners are advised to navigate with caution.

**Charts Affected**  
**RAN: Aus 114 - Aus 117**  
**DPI: WA 001**

Capt A J Gray  
Harbour Master  
Fremantle Ports  
21 March, 2016