



**THIS NOTICE IS FOR THE INFORMATION OF
SHIP'S MASTERS AND OTHERS CONCERNED**

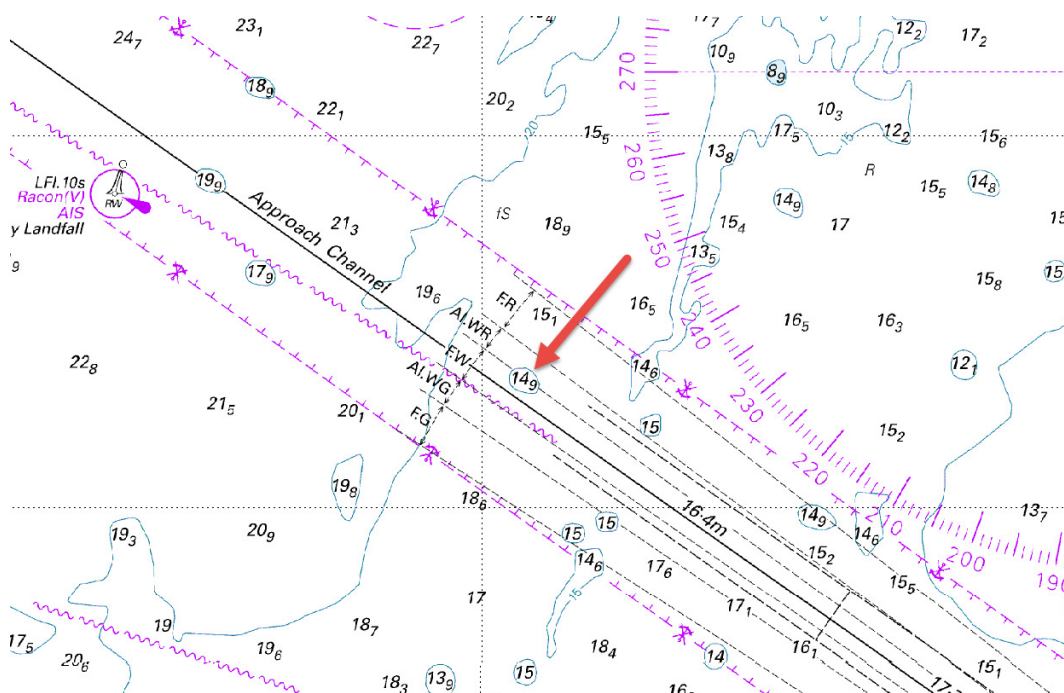
**FREMANTLE PORTS NOTICE TO MARINERS
5(P)/2019**

**FREMANTLE PORTS - Approach to Deepwater
Channel**

Hydrographic Survey has confirmed that a 14.9m shoal, North West of the approach to Deepwater Channel does not exist.

The shoal featured on RAN Chart AUS112 is shown on chartlet below.

The clearance depth of this position is in excess of 16.4m (Fremantle LAT) and the 14.9m shoal will be removed in subsequent chart updates.



Mariners are advised to navigate with caution.

Capt A J Gray
Harbour Master
Fremantle Ports
06th September 2019